

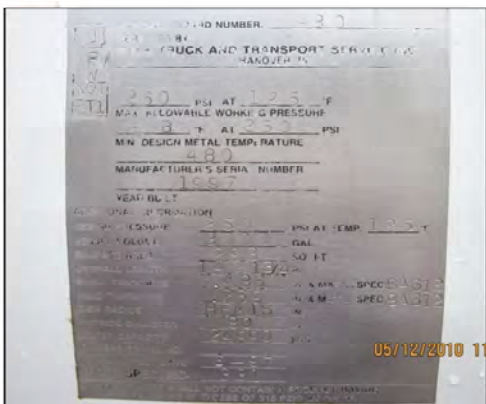
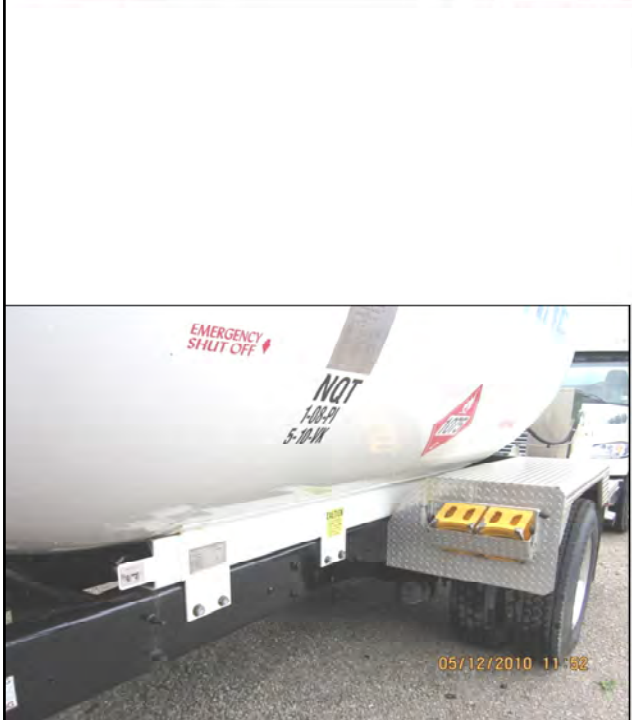
**Propane Cargo
Tank/Truck Photos
Spring 2010**



Truck 1

BTT 5-14-2010 (first 39 slides)

\\Ws-bco-fs1\projects\ETE\NPGA Bobtail Requal\Phase 2 - 2006\Bobtail Photos Spring 2010\BTT 5-14-2010\Truck01, 3000gal, 1989, 3, 3



Truck 2

\\Ws-bco-fs1\projects\ETE\NPGA Bobtail Requal\Phase 2 - 2006\Bobtail Photos Spring 2010\BTT 5-14-2010\Truck02, 3000gal, 1997, 1,3



Truck 3

\\Ws-bco-fs1\projects\ETE\NPGA Bobtail Requal\Phase 2 - 2006\Bobtail Photos Spring 2010\BTT 5-14-2010\Truck03, 3200gal, 2010, 1, 3



Truck 3 - Continued

\\Ws-bco-fs1\projects\ETE\NPGA Bobtail Requal\Phase 2 - 2006\Bobtail Photos Spring 2010\BTT 5-14-2010\Truck03, 3200gal, 2010, 1, 3



Truck 3 - Continued

\\Ws-bco-fs1\projects\ETE\NPGA Bobtail Requal\Phase 2 - 2006\Bobtail Photos Spring 2010\BTT 5-14-2010\Truck03, 3200gal, 2010, 1, 3



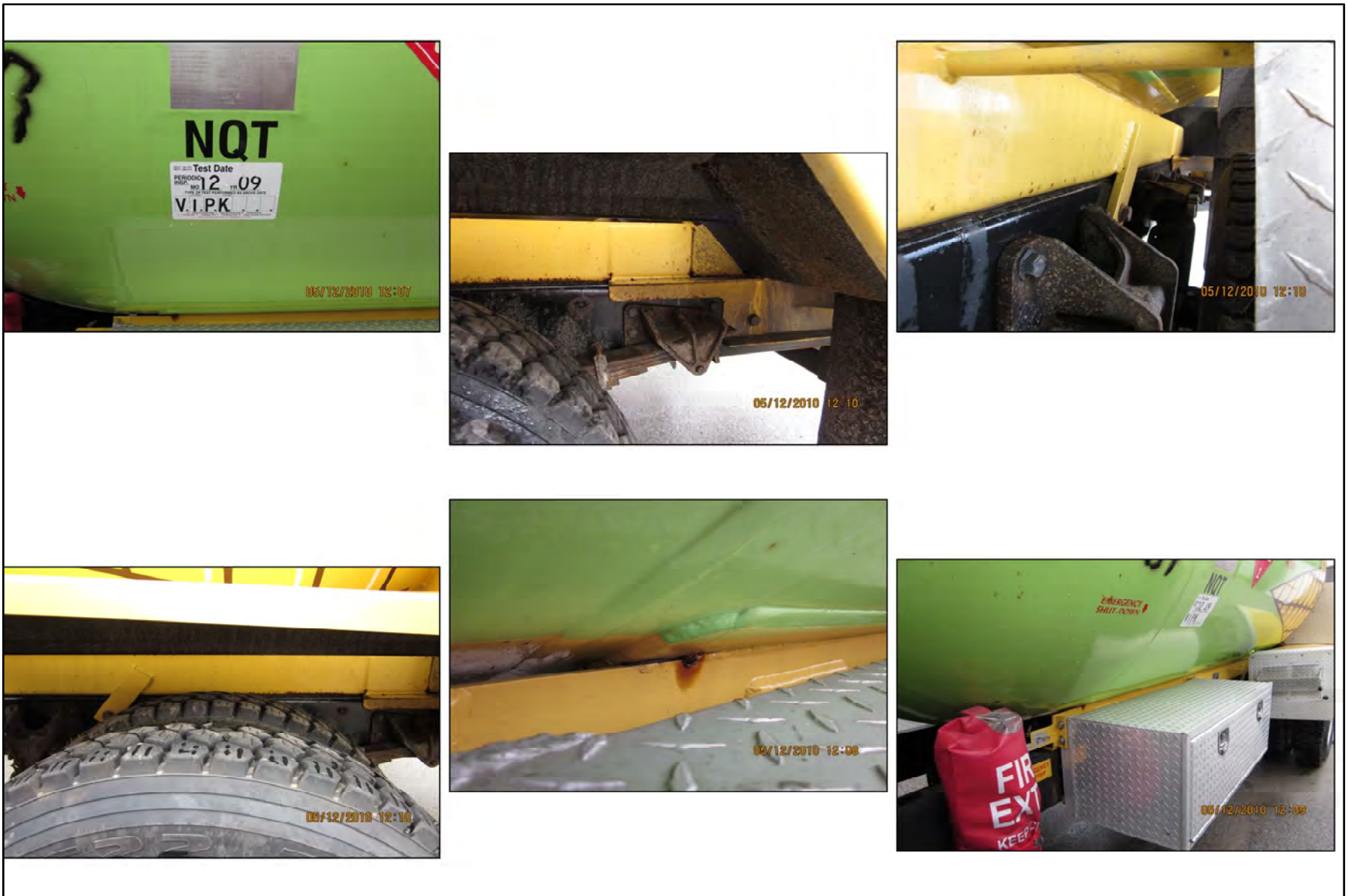
Truck 4

\\Ws-bco-fs1\projects\ETE\NPGA Bobtail Requal\Phase 2 - 2006\Bobtail Photos Spring 2010\BTT 5-14-2010\Truck04, 2900gal, 1967, 3, 3



Truck 4 - Continued

\\Ws-bco-fs1\projects\ETE\NPGA Bobtail Requal\Phase 2 - 2006\Bobtail Photos Spring 2010\BTT 5-14-2010\Truck04, 2900gal, 1967, 3, 3



Truck 5

\\Ws-bco-fs1\projects\ETE\NPGA Bobtail Requal\Phase 2 - 2006\Bobtail Photos Spring 2010\BTT 5-14-2010\Truck05, 3499gal, 2004, 1,3



Truck 5 – Continued

\\Ws-bco-fs1\projects\ETE\NPGA Bobtail Requal\Phase 2 - 2006\Bobtail Photos Spring 2010\BTT 5-14-2010\Truck05, 3499gal, 2004, 1,3



Truck 6

\\Ws-bco-fs1\projects\ETE\NPGA Bobtail Requal\Phase 2 - 2006\Bobtail Photos Spring 2010\BTT 5-14-2010\Truck06, 3000, 1986, 4, 3



Truck 6 – Continued

\\Ws-bco-fs1\projects\ETE\NPGA Bobtail Requal\Phase 2 - 2006\Bobtail Photos Spring 2010\BTT 5-14-2010\Truck06, 3000, 1986, 4, 3



Truck 7

\\Ws-bco-fs1\projects\ETE\NPGA Bobtail Requal\Phase 2 - 2006\Bobtail Photos Spring 2010\BTT 5-14-2010\Truck07, 3200gal, 1999, 3, 3



Truck 8

\\Ws-bco-fs1\projects\ETE\NPGA Bobtail Requal\Phase 2 - 2006\Bobtail Photos Spring 2010\BTT 5-14-2010\Truck08, 2788gal, 1978, 1, 3



Truck 8 –
 \\Ws-bco-fs1\projects\ETE\NPGA Bobtail Requal\Phase 2 - 2006\Bobtail Photos Spring
 2010\BTT 5-14-2010\Truck08, 2788gal, 1978, 1, 3Continued



Truck 9

\\Ws-bco-fs1\projects\ETE\NPGA Bobtail Requal\Phase 2 - 2006\Bobtail Photos Spring 2010\BTT 5-14-2010\Truck09, 2600gal, 1977, 3



Truck 9 Continued

\\Ws-bco-fs1\projects\ETE\NPGA Bobtail Requal\Phase 2 - 2006\Bobtail Photos Spring 2010\BTT 5-14-2010\Truck09, 2600gal, 1977, 3



Truck 10

\\Ws-bco-fs1\projects\ETE\NPGA Bobtail Requal\Phase 2 - 2006\Bobtail Photos Spring 2010\BTT 5-14-2010\Truck10, 3000gal, 1988, 3, 4



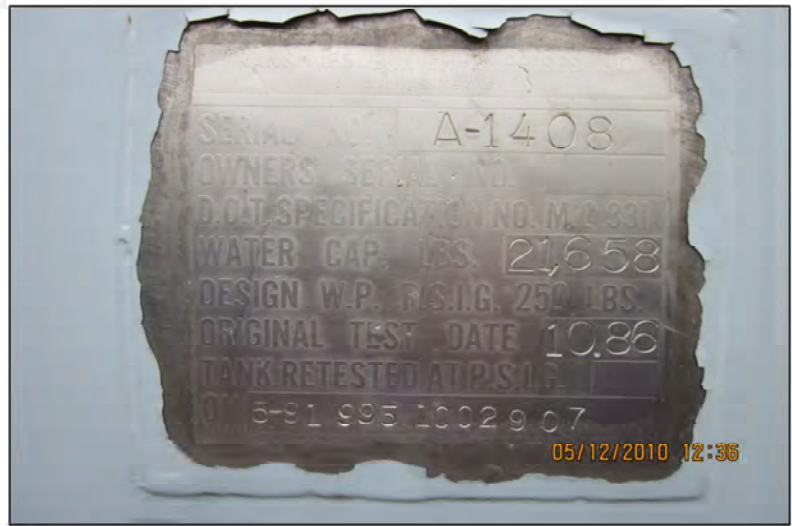
Truck 10 Continued

\\Ws-bco-fs1\projects\ETE\NPGA Bobtail Requal\Phase 2 - 2006\Bobtail Photos Spring 2010\BTT 5-14-2010\Truck10, 3000gal, 1988, 3, 4



Truck 11

\\Ws-bco-fs1\projects\ETE\NPGA Bobtail Requal\Phase 2 - 2006\Bobtail Photos Spring 2010\BTT 5-14-2010\Truck11, 2600gal, 1986, 1, 3



Truck 11 - Continued

\\Ws-bco-fs1\projects\ETE\NPGA Bobtail Requal\Phase 2 - 2006\Bobtail Photos Spring 2010\BTT 5-14-2010\Truck11, 2600gal, 1986, 1, 3



Truck 12

\\Ws-bco-fs1\projects\ETE\NPGA Bobtail Requal\Phase 2 - 2006\Bobtail Photos Spring 2010\BTT 5-14-2010\Truck12, 2600gal, 1990, 1



Truck 13

\\Ws-bco-fs1\projects\ETE\NPGA Bobtail Requal\Phase 2 - 2006\Bobtail Photos Spring 2010\BTT 5-14-2010\Truck13, 2600gal, 1972, 1, 3or4



Truck 13 - Continued

\\Ws-bco-fs1\projects\ETE\NPGA Bobtail Requal\Phase 2 - 2006\Bobtail Photos Spring 2010\BTT 5-14-2010\Truck13, 2600gal, 1972, 1, 3or4



Truck 15

\\Ws-bco-fs1\projects\ETE\NPGA Bobtail Requal\Phase 2 - 2006\Bobtail Photos Spring 2010\BTT 5-14-2010\Truck15, 2500gal, 1970



Truck 15 - Continued

\\Ws-bco-fs1\projects\ETE\NPGA Bobtail Requal\Phase 2 - 2006\Bobtail Photos Spring 2010\BTT 5-14-2010\Truck15, 2500gal, 1970



Truck 16
 \\Ws-bco-fs1\projects\ETE\NPGA Bobtail Requal\Phase 2 - 2006\Bobtail Photos Spring 2010\BTT 5-14-2010\Truck16, 3000gal, 1998, 1, 4



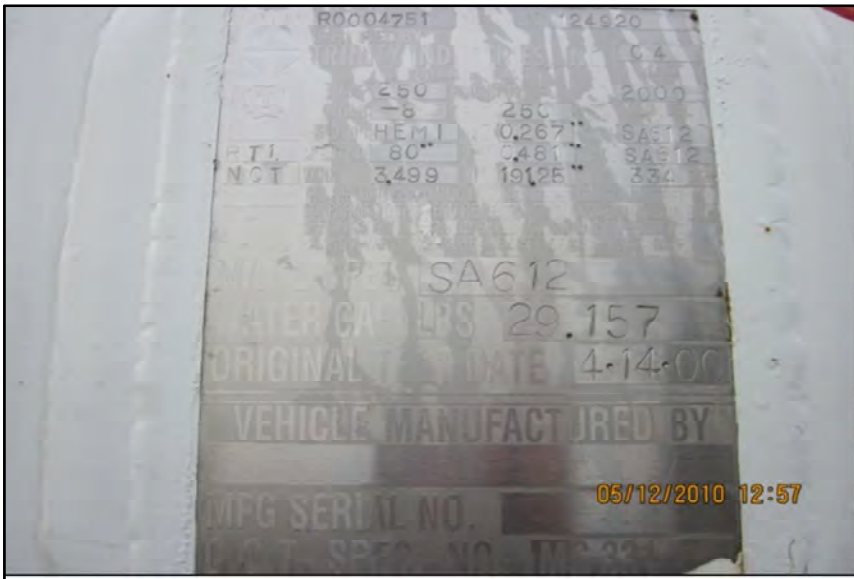
Truck 16

\\Ws-bco-fs1\projects\ETE\NPGA Bobtail Requal\Phase 2 - 2006\Bobtail Photos Spring 2010\BTT 5-14-2010\Truck16, 3000gal, 1998, 1, 4



Truck 17

\\Ws-bco-fs1\projects\ETE\NPGA Bobtail Requal\Phase 2 - 2006\Bobtail Photos Spring 2010\BTT 5-14-2010\Truck17, 3499gal, 2000, 1, 3



Truck 17 - Continued

\\Ws-bco-fs1\projects\ETE\NPGA Bobtail Requal\Phase 2 - 2006\Bobtail Photos Spring 2010\BTT 5-14-2010\Truck17, 3499gal, 2000, 1, 3



Truck 18

\\Ws-bco-fs1\projects\ETE\NPGA Bobtail Requal\Phase 2 - 2006\Bobtail Photos Spring 2010\BTT 5-14-2010\Truck18, 3000gal, 1969, 3, 3



Truck 19

\\Ws-bco-fs1\projects\ETE\NPGA Bobtail Requal\Phase 2 - 2006\Bobtail Photos Spring 2010\BTT 5-14-2010\Truck19, 2500gal, 1980,



Truck 19

\\Ws-bco-fs1\projects\ETE\NPGA Bobtail Requal\Phase 2 - 2006\Bobtail Photos Spring 2010\BTT 5-14-2010\Truck19, 2500gal, 1980,



Truck 20

\\Ws-bco-fs1\projects\ETE\NPGA Bobtail Requal\Phase 2 - 2006\Bobtail Photos Spring 2010\BTT 5-14-2010\Truck20, 2580gal, 1964, 3, 3or4



Truck 21

\\Ws-bco-fs1\projects\ETE\NPGA Bobtail Requal\Phase 2 - 2006\Bobtail Photos Spring 2010\BTT 5-14-2010\Truck21, 3000gal, 1994, 3, 3



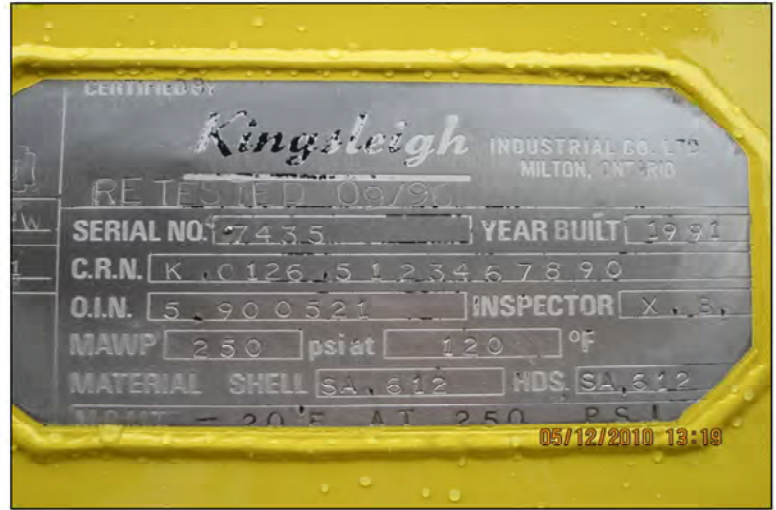
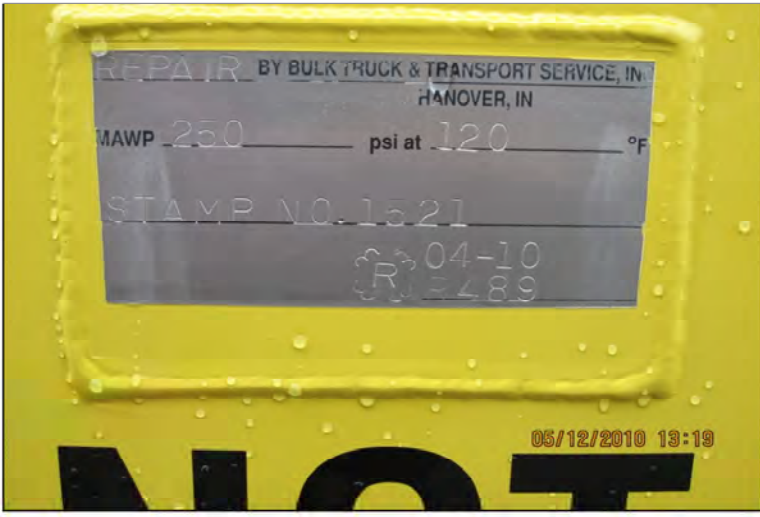
Truck 21 - Continued

\\Ws-bco-fs1\projects\ETE\NPGA Bobtail Requal\Phase 2 - 2006\Bobtail Photos Spring 2010\BTT 5-14-2010\Truck21, 3000gal, 1994, 3, 3



Truck 22

\\Ws-bco-fs1\projects\ETE\NPGA Bobtail Requal\Phase 2 - 2006\Bobtail Photos Spring 2010\BTT 5-14-2010\Truck22, 3500gal, 1991, 1, 3



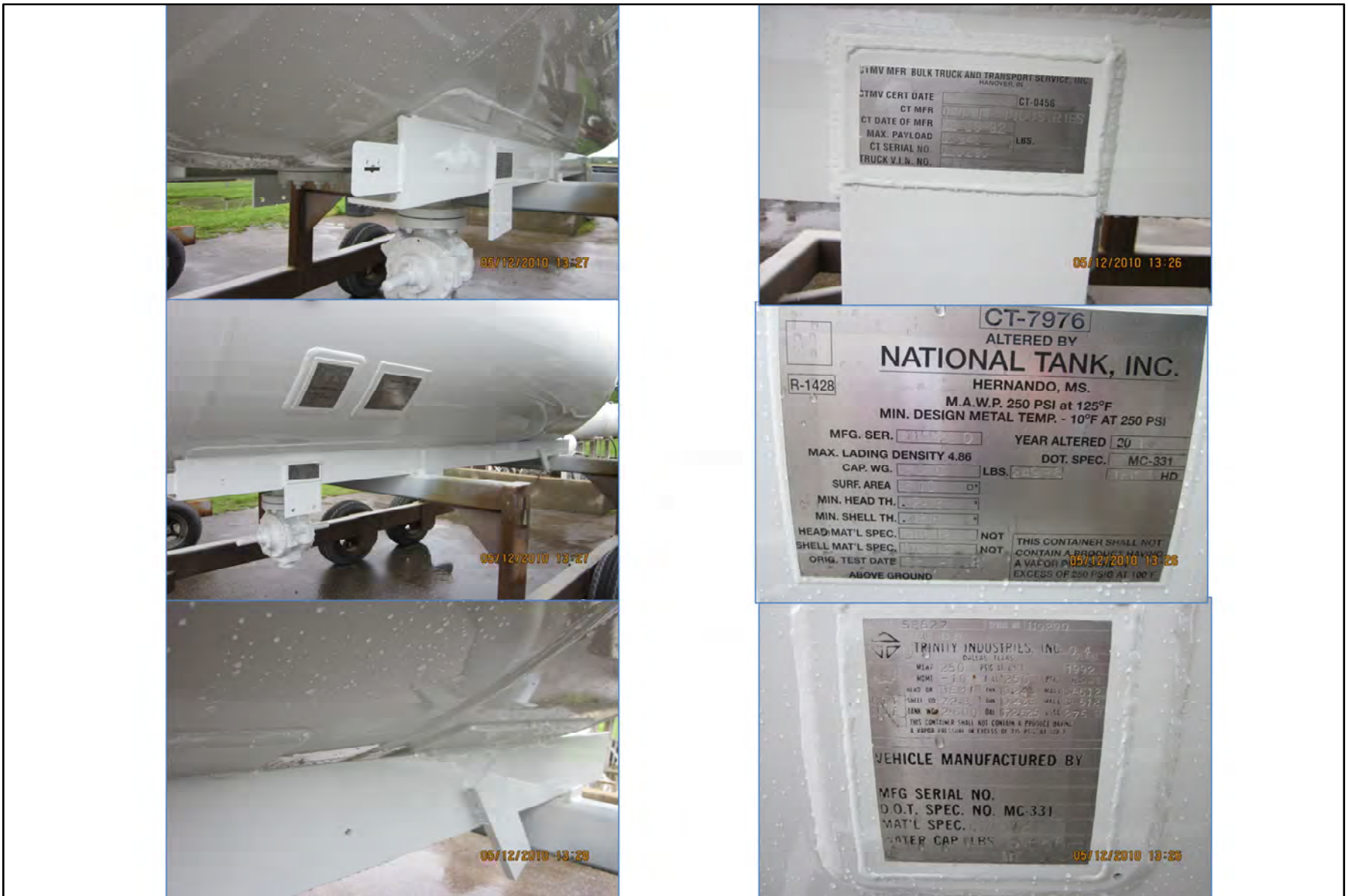
Truck 22 - Continued

\\Ws-bco-fs1\projects\ETE\NPGA Bobtail Requal\Phase 2 - 2006\Bobtail Photos Spring 2010\BTT 5-14-2010\Truck22, 3500gal, 1991, 1, 3



Truck 23

\\Ws-bco-fs1\projects\ETE\NPGA Bobtail Requal\Phase 2 - 2006\Bobtail Photos Spring 2010\BTT 5-14-2010\Truck23. 1600gal, 1957, 3



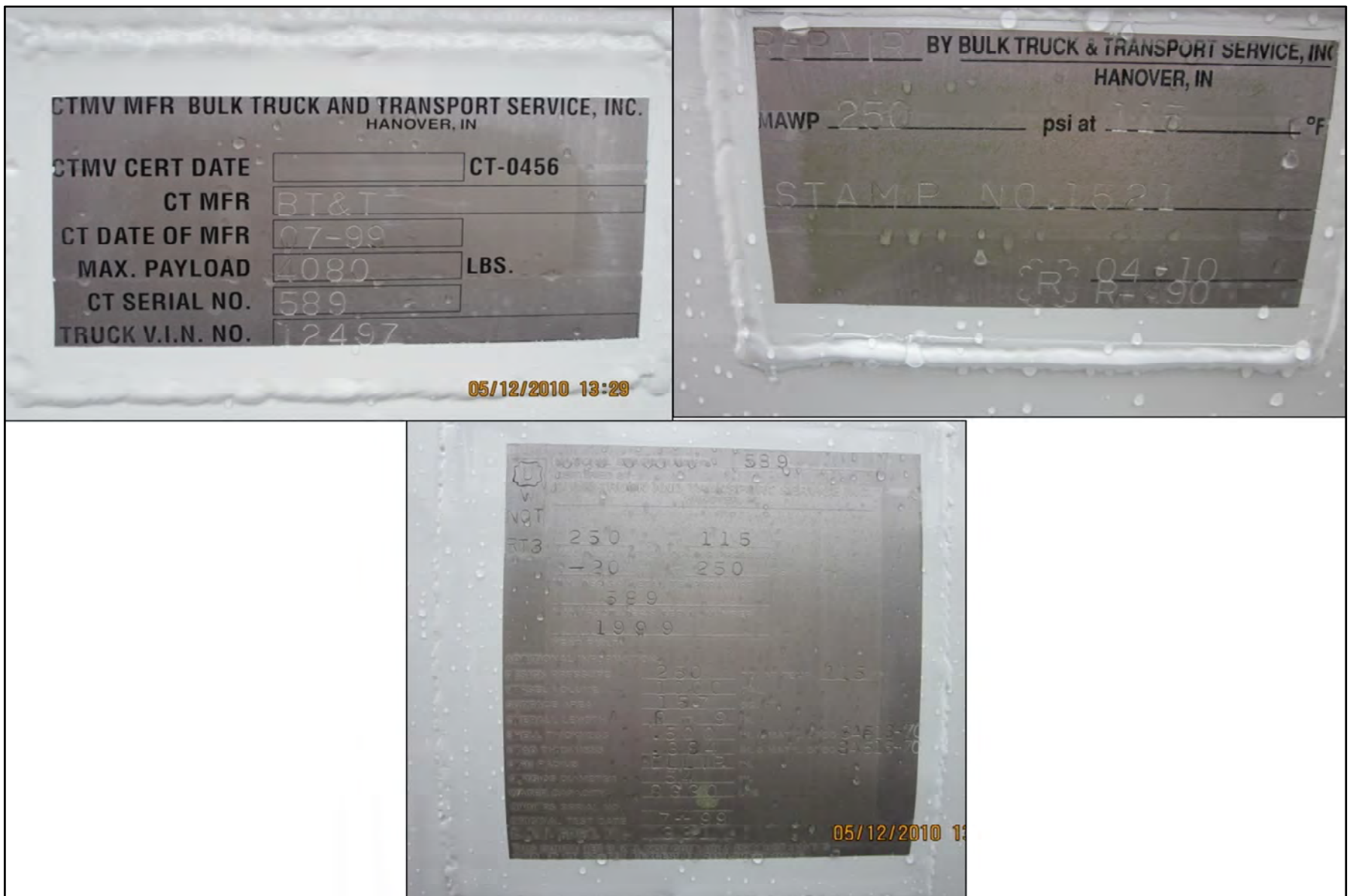
Truck 24

\\Ws-bco-fs1\projects\ETE\NPGA Bobtail Requal\Phase 2 - 2006\Bobtail Photos Spring 2010\BTT 5-14-2010\Truck24, 2600gal, 1992, 2, 3



Truck 25

\\Ws-bco-fs1\projects\ETE\NPGA Bobtail Requal\Phase 2 - 2006\Bobtail Photos Spring 2010\BTT 5-14-2010\Truck25, 1000gal, 1999, 1, 3



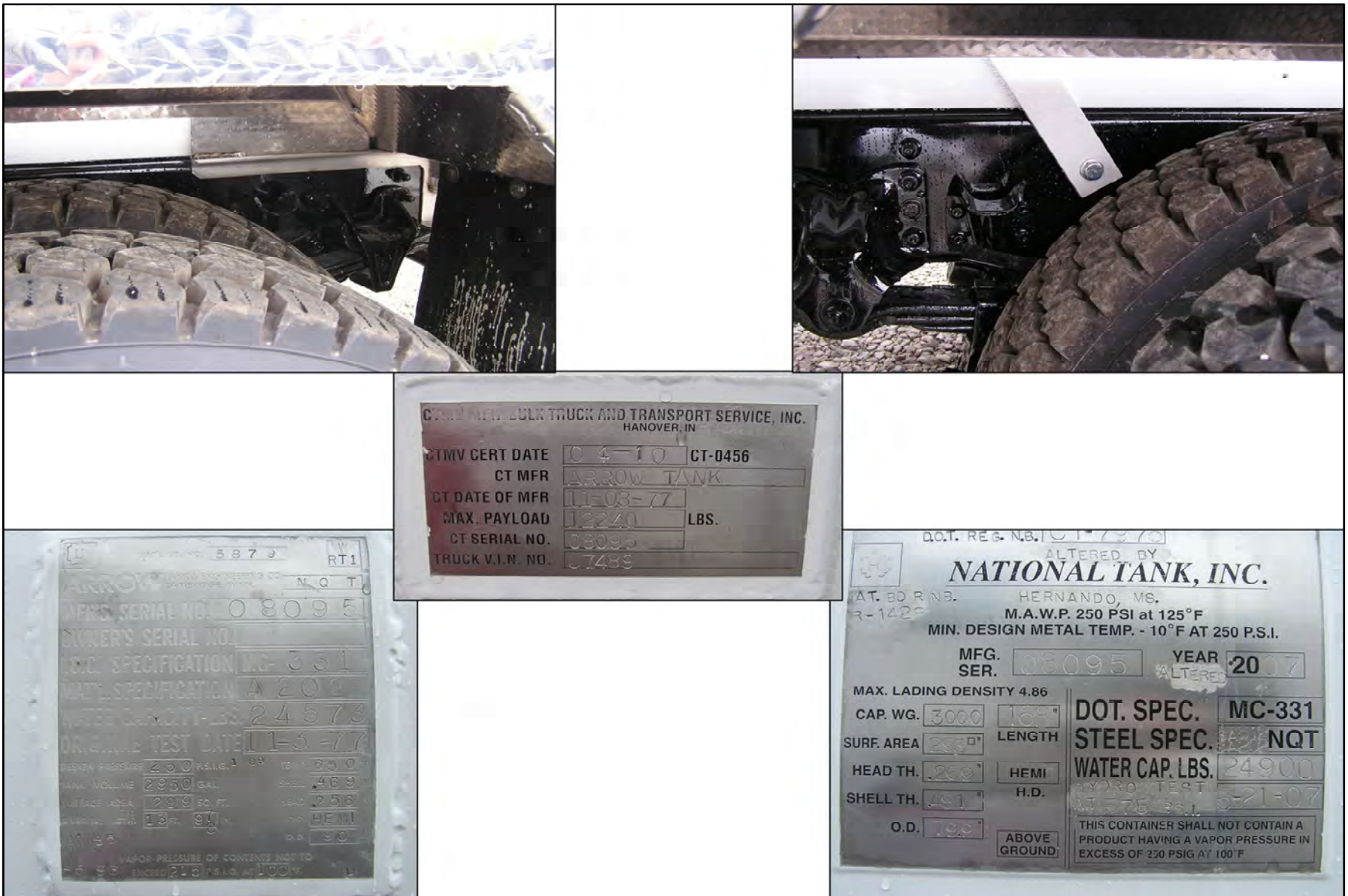
Truck 25 - Continued

\\Ws-bco-fs1\projects\ETE\NPGA Bobtail Requal\Phase 2 - 2006\Bobtail Photos Spring 2010\BTT 5-14-2010\Truck25, 1000gal, 1999, 1, 3



Truck 26

\\Ws-bco-fs1\projects\ETE\NPGA Bobtail Requal\Phase 2 - 2006\Bobtail Photos Spring 2010\BTT 5-14-2010\Truck26,2950 (in 1977) altered to 3000gal (in 2007), 2



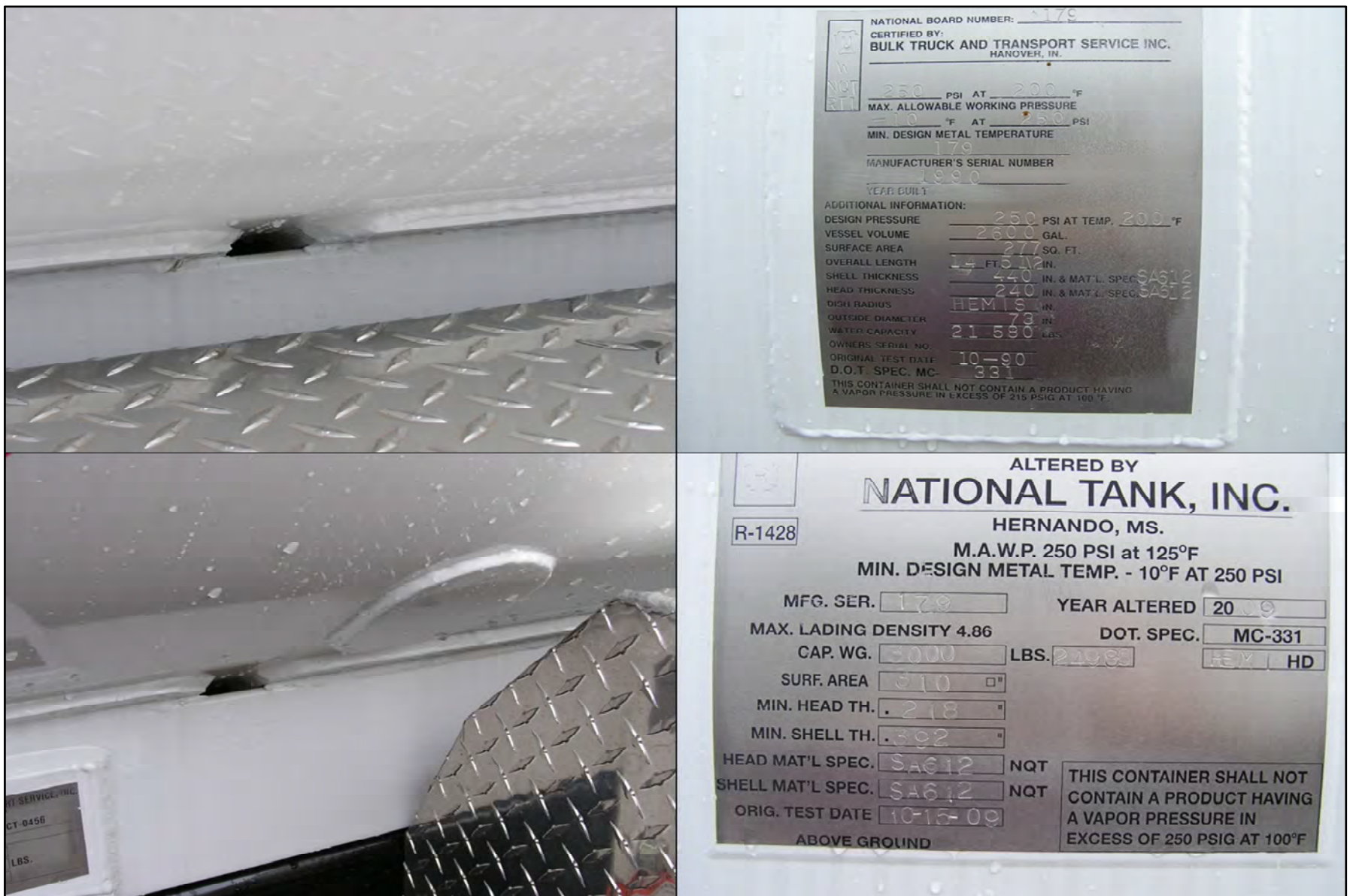
Truck 26 - Continued

\\Ws-bco-fs1\projects\ETE\NPGA Bobtail Requal\Phase 2 - 2006\Bobtail Photos Spring 2010\BTT 5-14-2010\Truck26,2950 (in 1977) altered to 3000gal (in 2007), 2



Truck 27

\\Ws-bco-fs1\projects\ETE\NPGA Bobtail Requal\Phase 2 - 2006\Bobtail Photos Spring 2010\BTT 5-14-2010\Truck27, 2600gal (in 1990) altered to 3000gal (in 2009), 6, 3



Truck 27 - Continued

\\Ws-bco-fs1\projects\ETE\NPGA Bobtail Requal\Phase 2 - 2006\Bobtail Photos Spring 2010\BTT 5-14-2010\Truck27, 2600gal (in 1990) altered to 3000gal (in 2009), 6, 3



Truck 27 - Continued

\\Ws-bco-fs1\projects\ETE\NPGA Bobtail Requal\Phase 2 - 2006\Bobtail Photos Spring 2010\BTT 5-14-2010\Truck27, 2600gal (in 1990) altered to 3000gal (in 2009), 6, 3



Congleton
\\Ws-bco-fs1\projects\ETE\NPGA Bobtail Requal\Phase 2 - 2006\Bobtail Photos Spring
2010\Congleton 4-29-2010



Eastern Propane

\\Ws-bco-fs1\projects\ETE\NPGA Bobtail Requal\Phase 2 - 2006\Bobtail Photos Spring 2010\Eastern Propane-Oil 5-04-2010



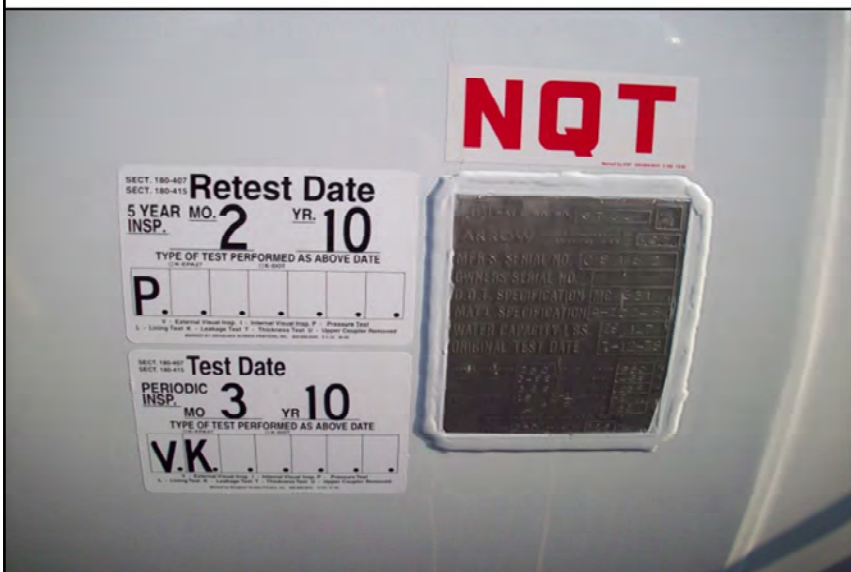
Eastern Propane - Continued

\\Ws-bco-fs1\projects\ETE\NPGA Bobtail Requal\Phase 2 - 2006\Bobtail Photos Spring 2010\Eastern Propane-Oil 5-04-2010



Ferrell Gas

\\Ws-bco-fs1\projects\ETE\NPGA Bobtail Requal\Phase 2 - 2006\Bobtail Photos Spring 2010\Ferrellgas



Ferrell Gas - Continued

\\Ws-bco-fs1\projects\ETE\NPGA Bobtail Requal\Phase 2 - 2006\Bobtail Photos Spring 2010\Ferrellgas



Ferrell Gas - Continued

\\Ws-bco-fs1\projects\ETE\NPGA Bobtail Requal\Phase 2 - 2006\Bobtail Photos Spring 2010\Ferrellgas



Ferrell Gas 4-28-2010

\\Ws-bco-fs1\projects\ETE\NPGA Bobtail Requal\Phase 2 - 2006\Bobtail Photos Spring 2010\Ferrellgas 4-28-2010



Ferrell Gas 4-28-2010 Continued

\\Ws-bco-fs1\projects\ETE\NPGA Bobtail Requal\Phase 2 - 2006\Bobtail Photos Spring 2010\Ferrellgas 4-28-2010

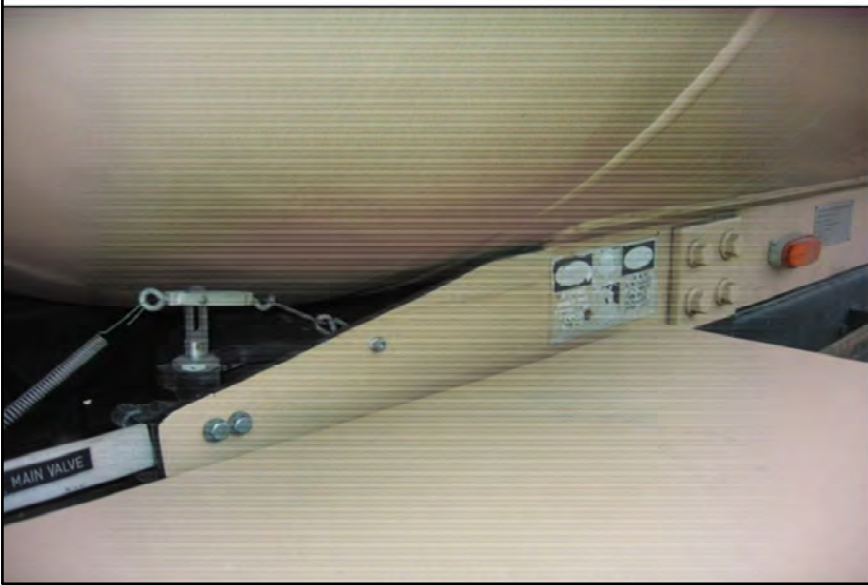


\\Ferrell Gas 4-28-2010 Continued

\\Ws-bco-fs1\projects\ETE\NPGA Bobtail Requal\Phase 2 - 2006\Bobtail Photos Spring 2010\Ferrellgas 4-28-2010



Gas Tex
\\Ws-bco-fs1\projects\ETE\NPGA Bobtail Requal\Phase 2 - 2006\Bobtail Photos Spring
2010\GasTex 4-07-2010



Gas Tex - Continued

\\Ws-bco-fs1\projects\ETE\NPGA Bobtail Requal\Phase 2 - 2006\Bobtail Photos Spring 2010\GasTex 4-07-2010



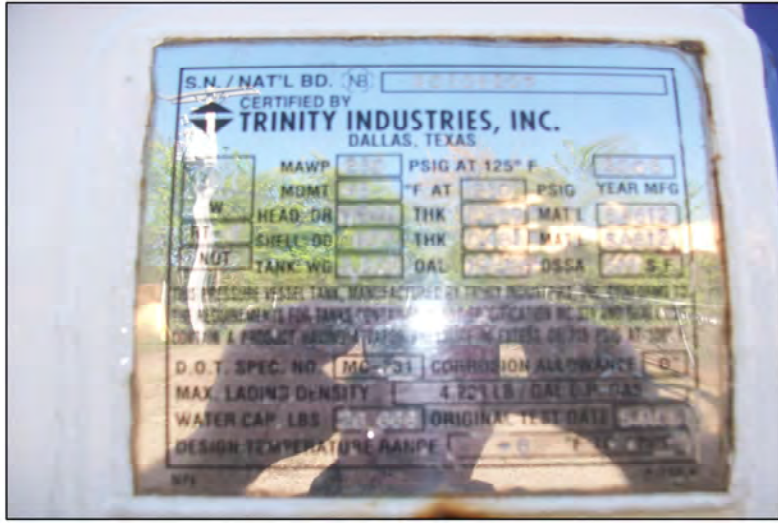
Gas Tex - Continued

\\Ws-bco-fs1\projects\ETE\NPGA Bobtail Requal\Phase 2 - 2006\Bobtail Photos Spring 2010\GasTex 4-07-2010



Industrial Propane

\\Ws-bco-fs1\projects\ETE\NPGA Bobtail Requal\Phase 2 - 2006\Bobtail Photos Spring 2010\IndustrialPropane 5-03-2010



Industrial Propane

\\Ws-bco-fs1\projects\ETE\NPGA Bobtail Requal\Phase 2 - 2006\Bobtail Photos Spring 2010\IndustrialPropane 5-03-2010



Keehn Service

\\Ws-bco-fs1\projects\ETE\NPGA Bobtail Requal\Phase 2 - 2006\Bobtail Photos Spring 2010\Keehn Service



Keehn Service - Continued

\\Ws-bco-fs1\projects\ETE\NPGA Bobtail Requal\Phase 2 - 2006\Bobtail Photos Spring 2010\Keehn Service



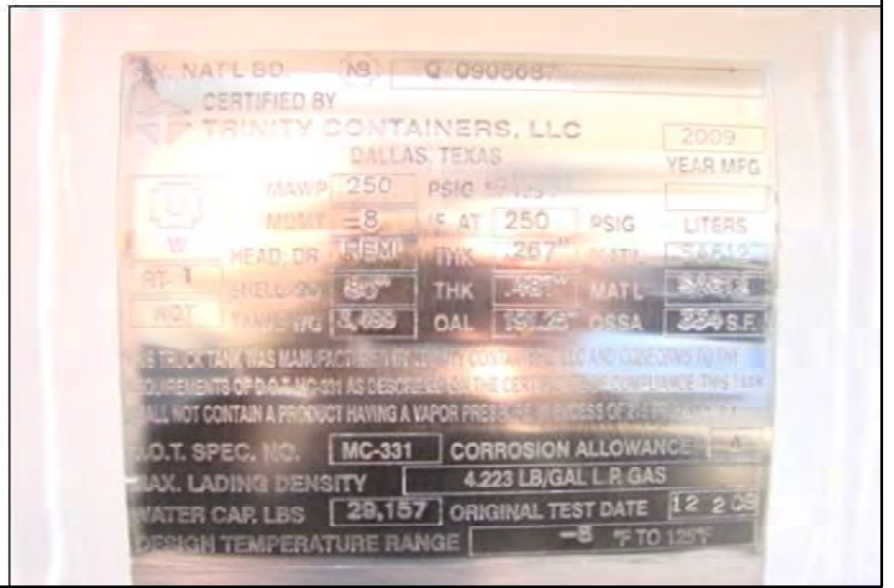
Keehn Service - Continued

\\Ws-bco-fs1\projects\ETE\NPGA Bobtail Requal\Phase 2 - 2006\Bobtail Photos Spring 2010\Keehn Service

NOTE: KEEHN SERVICE AND KEEHN SERVICE 3-21-2010 APPEAR TO BE THE SAME



Lin's Propane Truck
 \\Ws-bco-fs1\projects\ETE\NPGA Bobtail Requal\Phase 2 - 2006\Bobtail Photos Spring
 2010\Lin's Propane Truck



Lin's Propane Truck - Continued

\\Ws-bco-fs1\projects\ETE\NPGA Bobtail Requal\Phase 2 - 2006\Bobtail Photos Spring 2010\Lin's Propane Truck

Note: Lin's Propane Truck 4-5-2010 appears to be the same



McPherson

\\Ws-bco-fs1\projects\ETE\NPGA Bobtail Requal\Phase 2 - 2006\Bobtail Photos Spring 2010\McPherson

NOTE: MCPHERSON 4-5-2010 APPEARS TO BE THE SAME PHOTOS



Trinity
 \\Ws-bco-fs1\projects\ETE\NPGA Bobtail Requal\Phase 2 - 2006\Bobtail Photos Spring
 2010\Trinity



White Mountains 5-11-2010

Truck 23

\\Ws-bco-fs1\projects\ETE\NPGA Bobtail Requal\Phase 2 - 2006\Bobtail Photos Spring 2010\WhiteMountain 5-11-2010\Truck 23



White Mountains 5-11-2010

Truck 26

\\Ws-bco-fs1\projects\ETE\NPGA Bobtail Requal\Phase 2 - 2006\Bobtail Photos Spring 2010\WhiteMountain 5-11-2010\Truck 26



White Mountains 5-11-2010

Truck 27

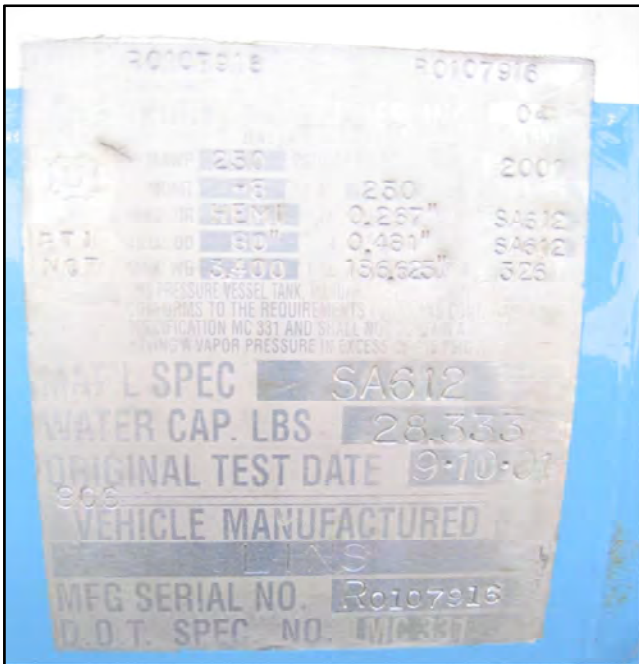
\\Ws-bco-fs1\projects\ETE\NPGA Bobtail Requal\Phase 2 - 2006\Bobtail Photos Spring 2010\WhiteMountain 5-11-2010\Truck 27



White Mountains 5-11-2010

Truck 28

\\Ws-bco-fs1\projects\ETE\NPGA Bobtail Requal\Phase 2 - 2006\Bobtail Photos Spring 2010\WhiteMountain 5-11-2010\Truck 28



White Mountains 5-11-2010

Truck 29

\\Ws-bco-fs1\projects\ETE\NPGA Bobtail Requal\Phase 2 - 2006\Bobtail Photos Spring 2010\WhiteMountain 5-11-2010\Truck 29