

इंटरनेट

मानक

Disclosure to Promote the Right To Information

Whereas the Parliament of India has set out to provide a practical regime of right to information for citizens to secure access to information under the control of public authorities, in order to promote transparency and accountability in the working of every public authority, and whereas the attached publication of the Bureau of Indian Standards is of particular interest to the public, particularly disadvantaged communities and those engaged in the pursuit of education and knowledge, the attached public safety standard is made available to promote the timely dissemination of this information in an accurate manner to the public.

“जानने का अधिकार, जीने का अधिकार”

Mazdoor Kisan Shakti Sangathan

“The Right to Information, The Right to Live”

“पुराने को छोड़ नये के तरफ”

Jawaharlal Nehru

“Step Out From the Old to the New”

IS 771-6 (1979): Glazed Fire-clay Sanitary Appliances, Part VI: Specific Requirements of Bed Pan Sinks [CED 3: Sanitary Appliances and Water Fittings]



“ज्ञान से एक नये भारत का निर्माण”

Satyanarayan Gangaram Pitroda

“Invent a New India Using Knowledge”



“ज्ञान एक ऐसा खजाना है जो कभी चुराया नहीं जा सकता है”

Bhartrhari—Nitiśatakam

“Knowledge is such a treasure which cannot be stolen”

BLANK PAGE



Indian Standard

SPECIFICATION FOR
GLAZED FIRE-CLAY SANITARY APPLIANCES

PART VI SPECIFIC REQUIREMENTS
OF BED PAN SINKS

(*Second Revision*)

First Reprint OCTOBER 1995

UDC 691.434.7:696.141.5

© Copyright 1980

BUREAU OF INDIAN STANDARDS
MANAK BHAVAN, 9 BAHADUR SHAH ZAFAR MARG
NEW DELHI 110002

*Indian Standard*SPECIFICATION FOR
GLAZED FIRE-CLAY SANITARY APPLIANCESPART VI SPECIFIC REQUIREMENTS
OF BED PAN SINKS*(Second Revision)*

Sanitary Appliances and Water Fittings Sectional Committee, BDC 3

Chairman

SHRI V. D. DESAI

Representing

Bombay Municipal Corporation

Members

ADVISER

Central Public Health & Environmental Engineering
Organization (Ministry of Works & Housing)SHRI B. B. RAU (*Alternate*)

SHRI H. R. BADYAL

Indian Iron & Steel Co Ltd, Calcutta

SHRI K. D. BISWAS (*Alternate*)

SHRI M. K. BASU

Central Glass & Ceramic Research Institute
(CSIR), Ahmadabad

SHRI D. S. CHABHAL

Directorate General of Technical Development,
New DelhiSHRI T. RAMASUBRAMANIAN (*Alternate*)

SHRI S. P. CHAKRABARTI

Central Building Research Institute (CSIR),
RoorkeeSHRI S. K. SHARMA (*Alternate*)

CHIEF ENGINEER

Public Health Engineering Department, Government
of Kerala, TrivandrumSHRI K. RAMACHANDRAN (*Alternate*)

CHIEF ENGINEER

Tamil Nadu Water Supply & Drainage Board,
Madras

CHIEF ENGINEER

U. P. Jal Nigam, Lucknow

SUPERINTENDING ENGINEER
(*Alternate*)

CHIEF ENGINEER (WATER)

Municipal Corporation of Delhi, Delhi

DRAINAGE ENGINEER (*Alternate*)

SHRI L. M. CHOUDHARY

Public Health Engineering Department, Government
of Haryana, ChandigarhSHRI I. CHANDRA (*Alternate*)*(Continued on page 2)*

© Copyright 1980

BUREAU OF INDIAN STANDARDS

This publication is protected under the *Indian Copyright Act* (XIV of 1957) and reproduction in whole or in part by any means except with written permission of the publisher shall be deemed to be an infringement of copyright under the said Act.

(Continued from page 1)

<i>Members</i>	<i>Representing</i>
CITY ENGINEER	Bombay Municipal Corporation
HYDRAULIC ENGINEER (<i>Alternate</i>)	
SHRI H. N. DALLAS	Indian Institute of Architects, Bombay
LALA G. C. DAS	National Test House, Calcutta
SHRI T. R. DE	Institution of Engineers (India), Calcutta
DIRECTOR	Bombay Potteries & Tiles Ltd, Bombay
SHRI A. M. KEMBHAVI (<i>Alternate</i>)	
SHRI B. R. N. GUPTA	Engineer-in-Chief's Branch (Army Headquarters)
SHRI K. V. KRISHNAMURTHY	
(<i>Alternate</i>)	
SHRI M. T. KANSE	Directorate General of Supplies & Disposals, New Delhi
SHRI S. R. KSHIRSAGAR	National Environmental Engineering Research Institute (CSIR), Nagpur
SHRI R. C. REDDY (<i>Alternate</i>)	
SHRI K. LAKSHMINARAYANAN	Hindustan Shipyard Ltd, Visakhapatnam
SHRI A. SHARIFF (<i>Alternate</i>)	
SHRI P. S. RAJVANSHI	Public Health Engineering Department, Govern- ment of Rajasthan, Jaipur
SHRI RANJIT SINGH	Railway Board (Ministry of Railways)
DR A. V. R. RAO	National Buildings Organization, New Delhi
SHRI P. JAGANATH RAO	E.I.D.-Parry Ltd, Madras
SHRI M. MOOSA SULAIMAN	
(<i>Alternate</i>)	
SHRI R. K. SOMANY	Hindustan Sanitaryware & Industries Ltd, Bahadurgarh
SUPERINTENDING SURVEYOR OF WORKS (NDZ)	Central Public Works Department, New Delhi
SURVEYOR OF WORKS I (NDZ) (<i>Alternate</i>)	
SHRI D. AJITHA SIMHA,	Director General, ISI (<i>Ex-officio Member</i>)
Director (Civ Engg)	

Secretary

SHRI S. P. MAGGU
Assistant Director (Civ Engg), ISI

Domestic Sanitary Appliances and Accessories Subcommittee, BDC 3 : 1

Convener

SHRI G. F. KHAMBATTI Bombay Municipal Corporation

Members

SHRI M. C. AGRAWAL Indian Plastics Ltd, Bombay
SHRI N. L. BIRLA (*Alternate*)
ASSISTANT DIRECTOR, STANDARDS Ministry of Railways
(ARCHITECTURE) (RDSO)

(Continued on page 6)

Indian Standard
SPECIFICATION FOR
GLAZED FIRE-CLAY SANITARY APPLIANCES

**PART VI SPECIFIC REQUIREMENTS
OF BED PAN SINKS**

(Second Revision)

0. FOREWORD

0.1 This Indian Standard (Part VI) (Second Revision) was adopted by the Indian Standards Institution on 4 May 1979, after the draft finalized by the Sanitary Appliances and Water Fittings Sectional Committee had been approved by the Civil Engineering Division Council.

0.2 This standard was first issued in 1958 and was revised in 1963 to cover requirements for additional glazed earthenware sanitary appliances, such as orissa pan, laboratory sink, squatting plate, slab and stall urinal and half-round channel. In this revision the scope of the standard has been restricted to cover requirements for glazed fire-clay sanitary appliances only, since the glazed earthenware sanitary appliances were outdated as well as unhygienic. The Sectional Committee has found that only some of the sanitary appliances were being made in the glazed fire-clay and, therefore, decided to cover the requirements for these appliances only in this revision. The general requirements applicable to all appliances and specific requirements for different types of appliances have been covered in separate parts of the standard. This standard (Part VI) lays down the specific requirements of bed pan sinks.

0.3 For the purpose of deciding whether a particular requirement of this standard is complied with, the final value, observed or calculated, expressing the result of a test or analysis, shall be rounded off in accordance with IS:2-1960*. The number of significant places retained in the rounded off value should be the same as that of the specified value in this standard.

1. SCOPE

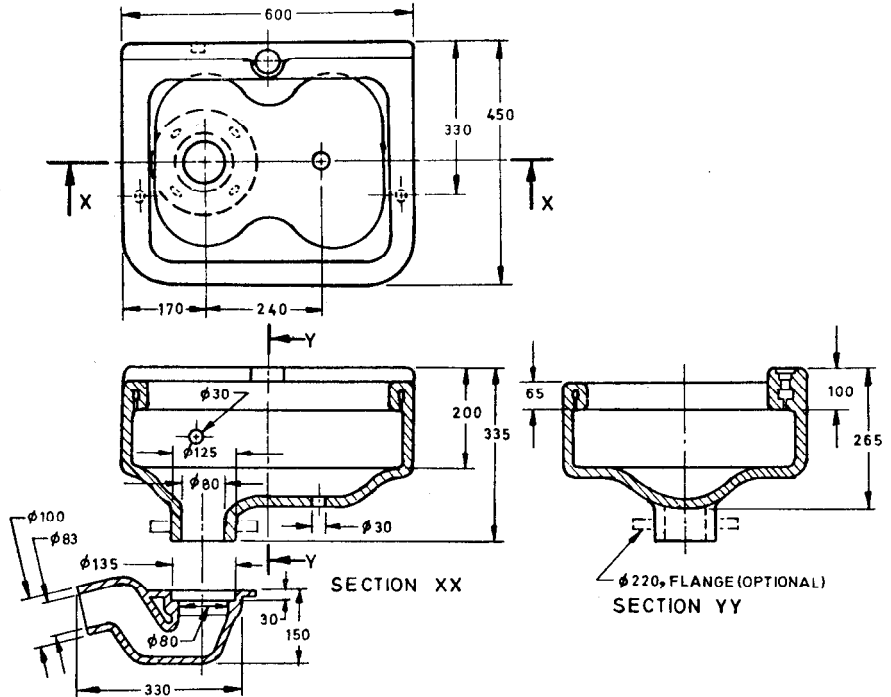
1.1 This standard (Part VI) lays down the pattern and size, construction, dimensions and tolerances of bed pan sinks made of fire-clay.

*Rules for rounding off numerical values (revised).

2. REQUIREMENTS

2.1 General — The general requirements of material, manufacture, methods of test, sampling and inspection shall conform to IS : 771 (Part I)-1979*.

2.2 Pattern and Size — Bed pan sink shall have a size of 600×450 mm (see Fig. 1).



All dimensions in millimetres.

FIG. 1 BED PAN SINK

2.3 Construction

2.3.1 The bed pan sink shall be of two piece construction consisting of bed pan sink and outlet trap.

2.3.2 The pan shall be provided with a flushing rim having adequate holes for flushing the whole of the interior surface of the bowl. It shall have a water inlet socket in the middle of the top face of the rim and a water inlet hole in the top side wall of the pan for connection to water sprayer.

*Specification for glazed fire-clay sanitary appliances; Part I General requirements (second revision).

2.3.3 The inside surface of the pan shall be uniform and smooth and shall have a circular waste hole at one end of the bed pan into which the interior of the pan shall drain. The waste outlet shall be provided with a flange with four holes for connection to the trap. The pan shall also have a second waste outlet of 30 mm diameter and shall be suitably connected to a waste pipe for further drainage of the pan.

2.3.4 Two stud slots shall be provided on the underside of the pan conforming to the requirements given in Fig. 1.

2.4 Dimensions and Tolerances

2.4.1 Dimensions — Bed pan sink shall have dimensions conforming to Fig. 1.

2.4.2 Tolerances — The following tolerances shall be permissible on the dimensions given in Fig. 1:

- | | |
|------------------------------------|-----------------|
| a) On dimensions less than 50 mm | ± 2 mm |
| b) On dimensions of 50 mm and over | ± 4 percent |

3. MARKING

3.1 Bed pan sinks shall be clearly and indelibly marked at a prominent place, visible after the pans are installed, with the name or trade-mark of the manufacturer.

3.1.1 Each bed pan sink conforming to the requirements specified in this standard may also be marked with the ISI Certification Mark.

NOTE — The use of the ISI Certification Mark is governed by the provisions of the Indian Standards Institution (Certification Marks) Act and the Rules and Regulations made thereunder. The ISI Mark on products covered by an Indian Standard conveys the assurance that they have been produced to comply with the requirements of that standard under a well-defined system of inspection, testing and quality control which is devised and supervised by ISI and operated by the producer. ISI marked products are also continuously checked by ISI for conformity to that standard as a further safeguard. Details of conditions under which a licence for the use of the ISI Certification Mark may be granted to manufacturers or processors, may be obtained from the Indian Standards Institution.

(Continued from page 2)

<i>Members</i>	<i>Representing</i>
SHRI M. K. BASU	Central Glass & Ceramic Research Institute (CSIR), Ahmadabad
SHRI G. T. BHIDE	National Buildings Organization, New Delhi
SHRI O. P. RATRA (<i>Alternate</i>)	
SHRI S. P. CHAKRABARTY	Central Building Research Institute (CSIR), Roorkee
CHIEF ENGINEER	Tamil Nadu Water Supply & Drainage Board, Madras
CHIEF ENGINEER (WATER)	Municipal Corporation of Delhi
ADDITIONAL CHIEF ENGINEER (WATER) (<i>Alternate</i>)	
CITY ENGINEER	Bombay Municipal Corporation
DIRECTOR	Bombay Potteries & Tiles Ltd, Bombay
SHRI A. M. KEMHAVI (<i>Alternate</i>)	
SHRI M. K. GANPULE	Parshuram Pottery Works Co Ltd, Thangadh
SHRI R. M. JOSHI (<i>Alternate</i>)	
SHRI B. R. N. GUPTA	Ministry of Defence
SHRI K. V. KRISHNAMURTHY (<i>Alternate</i>)	
SHRI M. T. KANSE	Directorate General of Supplies & Disposals, New Delhi
SHRI B. K. MALHAN	In personal capacity (9 Jain Mandir Road, New Delhi)
SHRI B. S. MIRCHANDANI	Phenoweld Polymer Private Limited, Bombay
SHRI A. S. MIRCHANDANI (<i>Alternate</i>)	
SHRI D. APPUKUTTAN NAIR	Public Health Engineering Department, Government of Kerala, Trivandrum
SHRI K. RAMACHANDRAN (<i>Alternate</i>)	
SHRI B. J. PENTONY	Neiveli Ceramics & Refractories Limited
SHRI UMATOSH SARKAR (<i>Alternate</i>)	
SHRI P. JAGANATH RAO	E.I.D.-Parry Ltd, Madras
SHRI M. MOOSA SULAIMAN (<i>Alternate</i>)	
SHRI L. R. SEHGAL	L. R. Sehgal & Company, New Delhi
SHRI AMAL KUMAR SEN	Bengal Enamel Works Ltd, Calcutta
SHRI R. K. SOMANY	Hindustan Sanitaryware & Industries Ltd Bahadurgarh
SURVEYOR OF WORKS (NDZ)	Central Public Works Department, New Delhi
SHRI S. A. TUNGARE	The Indian Institute of Architects, Bombay

BUREAU OF INDIAN STANDARDS

Headquarters:

Manak Bhavan, 9 Bahadur Shah Zafar Marg, NEW DELHI-110002

Telephones : 331 01 31

331 13 75

Telegrams : Manaksanstha

(Common to all Offices)

Regional Offices:

	Telephone
Central : Manak Bhavan, 9 Bahadur Shah Zafar Marg, NEW DELHI 110002	331 01 31
	331 13 75
*Eastern : 1/14 CIT Scheme VII M, V.I.P. Road, Maniktola, CALCUTTA 700054	37 86 62
Northern : SCO 335-336, Sector 34-A, CHANDIGARH 160 022	60 38 43
Southern : C.I.T. Campus, IV Cross Road, MADRAS 600113	235 23 15
†Western : Manakalaya, E9 MIDC, Marol, Andheri (East), BOMBAY 400093	832 92 95

Branch Offices:

'Pushpak', Nurmohamed Shaikh Marg, Khanpur, AHMADABAD 380001	30 13 48
‡Peenya Industrial Area, 1st Stage, Bangalore-Tumkur Road,, BANGALORE 550058	39 49 55
Gangotri Complex, 5th Floor, Bhadbhada Road, T.T. Nagar, BHOPAL 462003	55 40 21
Plot No. 21 Satyanagar, BHUBANESHWAR 751007	40 36 27
Kalaikathir Building, 6/48 Avanashi Road, COIMBATORE 641037	21 01 41
Plot No. 43, Sector 16 A, Mathura Road, FARIDABAD 121001	8-28 88 01
Savitri Complex, 116 G.T. Road, GHAZIABAD 201001	8-71 19 96
53/5 Ward No. 29, R.G. Barua Road, 5th By-lane, GUWAHATI 781003	54 11 37
5-8-56C L.N. Gupta Marg, Nampally Station Road, HYDERABAD 500001	20 10 83
R 14 Yudhister Marg, C Scheme, JAIPUR 302005	38 13 74
117/418 B Sarvodaya Nagar, KANPUR 208005	21 68 76
Seth Bhawan, 2nd Floor, Behind Leela Cinema, Naval Kishore Road, LUCKNOW 226001	23 89 23
Patliputra Industrial Estate, PATNA 800013	26 23 05
C/o Smt. Sunita Mirakhur,, 66 D/C Annexe, Gandhi Nagar, JAMMU TAWI 180004	—
T.C. No. 14/1421, University P.O., Palayam, THIRUVANANTHAPURAM 695034	6 21 17

Inspection Offices (With Sale Point):

Pushpanjali, 1st floor, 205-A, West High Court Road, Shankar Nagar Square, NAGPUR 440010	525171
Institution of Engineers (India) Building 1332 Shivaji Nagar, PUNE 411005	32 36 35

* Sales Office is at 5 Chowringhee Approach, P.O. Princep Street, CALCUTTA 700072 27 99 65

† Sales Office is at Novelty Chambers, Grant Road, BOMBAY 400007 309 65 28

‡ Sales Office is at 'F' Block, Unity Building, Narasimharaja Square, BANGALORE 560002 22 39 71