

इंटरनेट

मानक

### Disclosure to Promote the Right To Information

Whereas the Parliament of India has set out to provide a practical regime of right to information for citizens to secure access to information under the control of public authorities, in order to promote transparency and accountability in the working of every public authority, and whereas the attached publication of the Bureau of Indian Standards is of particular interest to the public, particularly disadvantaged communities and those engaged in the pursuit of education and knowledge, the attached public safety standard is made available to promote the timely dissemination of this information in an accurate manner to the public.

“जानने का अधिकार, जीने का अधिकार”

Mazdoor Kisan Shakti Sangathan

“The Right to Information, The Right to Live”

“पुराने को छोड़ नये के तरफ”

Jawaharlal Nehru

“Step Out From the Old to the New”

IS 4043 (1969): Recommendations for Symbolic Designation of Direction of Closing and Faces of Doors, Windows and Shutters [CED 11: Doors, Windows and Shutter]



“ज्ञान से एक नये भारत का निर्माण”

Satyanarayan Gangaram Pitroda

“Invent a New India Using Knowledge”



“ज्ञान एक ऐसा खजाना है जो कभी चुराया नहीं जा सकता है”

Bhartrhari—Nitiśatakam

“Knowledge is such a treasure which cannot be stolen”



BLANK PAGE



*Indian Standard*

RECOMMENDATIONS FOR  
SYMBOLIC DESIGNATION OF DIRECTION  
OF CLOSING AND FACES OF DOORS,  
WINDOWS AND SHUTTERS

( Second Reprint MAY 1986 )

UDC 69.028-5:003.62



© Copyright 1969

INDIAN STANDARDS INSTITUTION  
MANAK BHAVAN, 9 BAHADUR SHAH ZAFAR MARG  
NEW DELHI 110002

# *Indian Standard*

## RECOMMENDATIONS FOR SYMBOLIC DESIGNATION OF DIRECTION OF CLOSING AND FACES OF DOORS, WINDOWS AND SHUTTERS

Doors, Windows and Shutters Sectional Committee, BDC 11

### *Chairman*

SHRI T. S. NARAYANA RAO

### *Representing*

In personal capacity (9 Mahatma Gandhi Road, Bangalore-1); and The Institution of Engineers (India), Calcutta

### *Members*

SHRI B. D. AHUJA	National Buildings Organization, New Delhi
SHRI K. R. JANI ( <i>Alternate</i> )	
SHRI R. M. CHAUDHRI	Indian Aluminium Co Ltd, Calcutta
SHRI J. K. ANAND ( <i>Alternate</i> )	
DEPUTY DIRECTOR STANDARDS (ARCHITECTURE)	Ministry of Railways (Railway Board)
SHRI R. D. GAUTAM	Albion Plywood Co Ltd, Calcutta
SHRI GHULAM QADIR	J & K Industries Ltd, Srinagar
DEPUTY MANAGER ( <i>Alternate</i> )	
HONORARY SECRETARY	Indian Metal Window Association, Bombay
SHRI M. J. JAL	Godrej & Boyce Mfg Ltd, Bombay
SHRI G. K. DATAR ( <i>Alternate</i> )	
SHRI G. R. JOLLY	Builders' Association of India, Bombay
DR JOSEPH GEORGE	Central Building Research Institute (CSIR) Roorkee
SHRI T. N. GUPTA ( <i>Alternate</i> )	
SHRI M. T. KANSE	Directorate General of Supplies and Disposals
SHRI B. K. KHAITAN	Andamans Timber Industries Ltd, Calcutta
SHRI A. N. KHIRA	Jayanand Khira & Co Private Ltd, Calcutta
SHRI K. VENUGOPAL ( <i>Alternate</i> )	
SHRI L. S. KUMAWAT	Engineer-in-Chief's Branch, New Delhi
SHRI K. S. LAULY	Indian Plywood Manufacturing Co Ltd, Dandeli,
MANAGING DIRECTOR	Hindustan Housing Factory Ltd, New Delhi
SHRI K. G. SALVI ( <i>Alternate</i> )	
SHRI N. J. MASANI	Forest Research Institute and Colleges, Dehra Dun
SHRI J. S. MATHABU	Directorate General of Technical Development, New Delhi
SHRI G. M. MEHTA	Standard Rolling Shutters and Engineering Works Pvt Ltd, Bombay
SHRI R. L. CHADHA ( <i>Alternate</i> )	

(Continued on page 2)

**INDIAN STANDARDS INSTITUTION  
MANAK BHAVAN, 9 BAHADUR SHAH ZAFAR MARG  
NEW DELHI**

( Continued from page 1 )

*Members*

*Representing*

SHRI S. K. MULLICK	Hopes Metal Window ( India ) Ltd, Calcutta
SHRI S. K. BHARGAVA ( <i>Alternate</i> )	
SHRI M. K. NAG	Federation of Indian Plywood and Panel Industry, New Delhi
SHRI THOMAS PAUL ( <i>Alternate</i> )	
SHRI K. B. PABEKH	Mysore Commercial Union Ltd, Bangalore
SHRI A. K. RAMACHANDRA	Indian Plywood Manufacturers' Research Association, Bangalore
SHRI N. VENKATARAMAN ( <i>Alternate</i> )	
SHRI K. SANKARAKRISHNAN	Kutty Flush Doors and Furniture Co Pvt Ltd, Madras
SHRI C. S. DORAIRAJA ( <i>Alternate</i> )	
SENIOR ARCHITECT B (1)	Central Public Works Department
SHRI J. D. SHASTRI	Indian Institute of Architects, Bombay
SHRI C. D. SHARMA ( <i>Alternate</i> )	
SHRI G. R. SUNDERAM	Man Industrial Corporation Ltd, Jaipur
SHRI K. R. ANANTHASWAMY ( <i>Alternate</i> )	
SHRI H. THOMSON	Plywood Products, Sitapur
SHRI G. W. M. WHITTLE ( <i>Alternate</i> )	
SHRI S. V. VISWANATHAN	Diana Rolling Shutters and Engineering Works, Calcutta
SHRI R. NAGARAJAN, Director ( Civ Engg )	Director General, ISI ( <i>Ex-officio Member</i> )

*Secretary*

SHRI J. VENKATARAMAN  
Assistant Director ( Civ Engg ), ISI

# *Indian Standard*

## RECOMMENDATIONS FOR SYMBOLIC DESIGNATION OF DIRECTION OF CLOSING AND FACES OF DOORS, WINDOWS AND SHUTTERS

### 0. FOREWORD

**0.1** This Indian Standard was adopted by the Indian Standards Institution on 6 September 1969, after the draft finalized by the Doors, Windows and Shutters Sectional Committee had been approved by the Civil Engineering Division Council.

**0.2** Hardware rotating components, like hinges and hinge-pins, pivots, or components for locking and closing, like bolts and locks used on doors, windows or shutters, are not identical; their form depending on whether they are used on leaves closing in one direction or the other and, frequently, on their position on the various faces. The structure of these components itself differs often with the kind of hardware.

The purpose of this standard is to facilitate the trade of these components by specifying a standard convention to identify the direction of rotation of the leave of a door, window or shutter and to provide designations and symbols, accordingly which are unambiguous, avoiding the use of such terms as 'left hand' and 'right hand' which cause mistakes owing to divergent national uses. These designations do not necessitate the use of drawings. By designating the direction of rotation and, if necessary, the faces, the designation of symbols allow to order without mistake the hardware

**0.2.1** This standard is intended to provide uniform terminology for designation of doors and windows and their hardware with respect to direction of operation to facilitate purchase and specifying the same in the various standards. This standard deals with the conventions and general principles for the determination of symbols. Particular cases and components with more than one leaf will be dealt with in other standards.

**0.3** This standard is based on the Draft ISO Recommendation No. 951—2nd Draft (3rd drafting) 'Symbolic designation of direction of closing and faces of doors, windows and shutters'.

## 1. SCOPE

### 1.1 This standard fixes conventions:

- to designate and symbolize the direction on plan of closing of door, window or shutter leaves;
- to identify by a symbol each of the faces of doors, windows or shutters in relation to their direction of operation; and
- to specify the arrangement of the frame of doors, windows or shutters in relation to the premises or the room to be isolated.

## 2. TERMINOLOGY

2.0 For the purpose of this standard the following definitions shall apply.

### 2.1 Directions of Rotation

2.1.1 *Clockwise* — A rotation in which the upper part of the object is moved to the right.

2.1.2 *Anticlockwise* — A rotation in which the upper part of the object is moved to the left.

2.1.3 *Conventional Direction of Rotation* — That of the two directions of rotation causing the leaves to open or to close which is chosen according to this standard for the designation of the latter ( see 5.1 ).

### 2.2 Identification of Faces

2.2.1 *Closing Face* — The face of the leaf located on the side on which the leaf closes ( see Fig. 1 and Fig. 2 ).

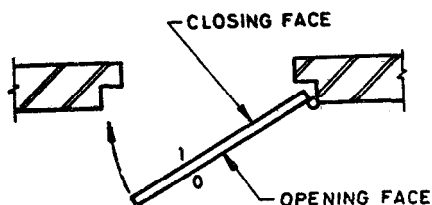


FIG. 1 CLOCKWISE CLOSING : 5

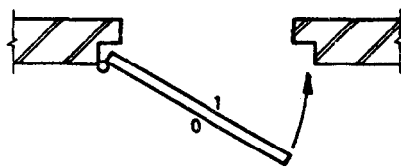


FIG. 2 ANTICLOCKWISE CLOSING : 6

2.2.2 *Opening Face* — The face of the leaf located on the side on which the leaf opens ( see Fig. 1 and Fig. 2 ).

2.2.3 *Conventional Face* — That of the two faces, closing face or opening face which is chosen according to this standard to fix the position of doors, windows or shutters ( see 5.2 ).



### 3. FIELD OF APPLICATION

**3.1** This standard applies to doors, windows and shutters, the leaves of which move around one or more vertical axis.

**3.1.1** It applies neither to components, the leaves of which move around horizontal axis, nor to components the leaves of which move by translation.

### 4. SYMBOLS

**4.1** The following are the recommended symbols:

	<i>Symbol</i>
a) Clockwise	5
b) Anticlockwise	6
c) Closing face	1
d) Opening face	0

**NOTE** — When the symbols 1 and 0 are insufficient to determine the position of the hardware, the conventional face of the shutter will be identified by that of its faces which is situated in the part to be isolated or designated in some other manner.

### 5. CONVENTIONS

**5.1 Direction of Rotation** — The conventional direction of rotation is the direction of closing.

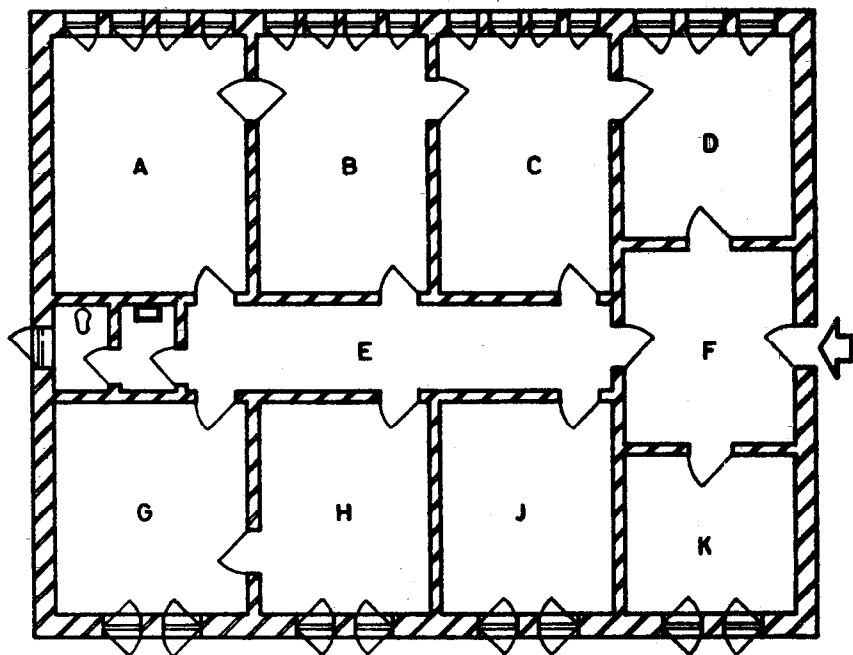
**5.2 Face of Identification** — The conventional face to identify is the one which is located inside the premises or the room to be isolated or designated in another way.

**5.2.1** When there is an ambiguity, for example, for a communicating room between two rooms of the same nature, the room to be isolated is the room in which is situated the opening face of the leaf when the door is closed.

### 6. APPLICATION TO DOORS, WINDOWS AND SHUTTERS

**6.1 Single Leaf Component** — Unless otherwise stated in the standard, the single leaf components should be designated by a whole set of symbols in accordance with the conventions stated in 5.

**6.1.1 Example of Designation** — A door which moves clockwise should be designated by the symbol 5.0 if its inside face is the opening face and by the symbol 5.1 if it is the closing face. Typical examples of designation are illustrated in Fig. 3.



Room A	— Doors: entry: 60 Communicating with room B: 50*
Room B	— Doors: entry: 60 Communicating with room A: 60*
Room C	— Doors: entry: 60 Communicating with room B: 60
Room D	— Doors: entry: 60 Communicating with room C: 50
Corridor E	— Door: 60
Hall F	— Door: 50
Room G	— Doors: entry: 50 Communicating with room H: 50
Rooms H, J, K	— Doors: 50 Windows: 1 type 50 with shutter 61 — 1 type 60 with shutter 51
Lavatory	— Door: 50
W. C.	— Door: 50 Window: 1 type 51

\*The communicating door between the rooms A and B is a double door (not a door with two leaves).

FIG. 3 TYPICAL EXAMPLES OF DESIGNATION

**6.2 Components with More than One Leaf** — The designation of components with more than one leaf should be individual, each leaf being designated by a whole set of symbols in accordance with the conventions stated in 5.

**NOTE** — For components which have more than one leaf certain additional conventions allowing a reduction of the resulting symbolization will be included later.

## **7. APPLICATION TO HARDWARE ACCESSORIES**

**7.1** While placing orders it is advisable to order the suitable hardware items by referring to the whole standard designations of the components they are intended for even when, in particular cases, a single one of these symbols would seem sufficient.

*Examples:*

Hinges for window 6.0

Mortice lock, with safety blocks and closing knob for door 5.1.