

इंटरनेट

मानक

Disclosure to Promote the Right To Information

Whereas the Parliament of India has set out to provide a practical regime of right to information for citizens to secure access to information under the control of public authorities, in order to promote transparency and accountability in the working of every public authority, and whereas the attached publication of the Bureau of Indian Standards is of particular interest to the public, particularly disadvantaged communities and those engaged in the pursuit of education and knowledge, the attached public safety standard is made available to promote the timely dissemination of this information in an accurate manner to the public.

“जानने का अधिकार, जीने का अधिकार”

Mazdoor Kisan Shakti Sangathan

“The Right to Information, The Right to Live”

“पुराने को छोड़ नये के तरफ”

Jawaharlal Nehru

“Step Out From the Old to the New”

IS 11239-13 (1992): Methods of Test for Rigid Cellular Thermal Insulation Materials, Part 13: Determination of Flammability by Oxygen Index [CHD 27: Thermal Insulation]



“ज्ञान से एक नये भारत का निर्माण”

Satyanarayan Gangaram Pitroda

“Invent a New India Using Knowledge”



“ज्ञान एक ऐसा खजाना है जो कभी चुराया नहीं जा सकता है”

Bhartrhari—Nitiśatakam

“Knowledge is such a treasure which cannot be stolen”

BLANK PAGE



भारतीय मानक

कोशिकीय तापरोधन सामग्रियों की परीक्षण पद्धति

भाग 14 आक्सीजन सूचक द्वारा ज्वलनशीलता का अवधारण

Indian Standard

**METHODS OF TEST FOR RIGID CELLULAR
THERMAL INSULATION MATERIALS**

PART 14 DETERMINATION OF FLAMMABILITY BY OXYGEN INDEX

UDC 662'998 — 405'8 : 536'468

© BIS 1992

BUREAU OF INDIAN STANDARDS
MANAK BHAVAN, 9 BAHADUR SHAH ZAFAR MARG
NEW DELHI 110002

FOREWORD

This Indian Standard was adopted by the Bureau of Indian Standards, after the draft finalized by the Thermal Insulation Materials Sectional Committee had been approved by the Chemical Division Council.

This test method is used for testing materials that are self-supporting in the form of vertical bars or sheet up to 10.5 mm thick. This method is suitable for solid, laminated or cellular materials characterized by an apparent density greater than 100 kg/m³. This method may also be applicable to some cellular materials having an apparent density of less than 100 kg/m³. A method has also been provided for testing flexible sheet or film materials while being supported vertically.

Oxygen index results obtained using the methods described in this standard can provide a sensitive measure of the burning characteristics of materials under certain controlled laboratory conditions and hence may be useful for quality control purposes. The results obtained are dependent upon the shape, orientation and isolation of the test specimen and the conditions of ignition. For particular materials or applications, it may be necessary or appropriate to specify different ignition procedures which may not be comparable and no correlation with flammability behaviour under other fire conditions is implied.

Results obtained in accordance with this standard must not be used to describe or appraise the fire hazard presented by a particular material or shape under actual fire conditions, unless used as one element of a fire risk assessment that takes into account all of the factors pertinent to the assessment of the fire hazard of a particular application for the material.

For the purpose of deciding whether a particular requirement of this standard is complied with, the final value, observed or calculated, expressing the result of a test or analysis, shall be rounded off in accordance with IS 2: 1960 'Rules for rounding off numerical values (*revised*)'. The number of significant places retained in the rounded off value should be the same as that of the specified value in this standard.

Indian Standard

METHODS OF TEST FOR RIGID CELLULAR THERMAL INSULATION MATERIALS

PART 14 DETERMINATION OF FLAMMABILITY BY OXYGEN INDEX

1 SCOPE

This standard specifies methods for determining the minimum concentration of oxygen, in admixture with nitrogen, that will support combustion of small vertical test specimens under specified test conditions. The results are defined as oxygen Index values.

NOTES

1 It may not be possible to apply these methods satisfactorily to materials that exhibit high levels of shrinkage when heated, for example, highly oriented thin film.

2 For assessing the flame propagation properties of cellular materials of density less than 100 kg/m³, attention is drawn to IS 11239 (Part 12) : 1989.

2 REFERENCES

The Indian Standards listed below are necessary adjuncts to this standard :

<i>IS No.</i>	<i>Title</i>
3069 : 1991	Glossary of terms, symbols and units relating to thermal insulation materials
4905 : 1968	Methods for random sampling (<i>second revision</i>)
11239 (Part 12) : 1989	Methods of test for rigid cellular thermal insulation materials : Part 12 Horizontal burning characteristics

3 TERMINOLOGY

For the purposes of this standard, definitions given in IS 3069 : 1991 in addition to the following shall apply.

3.1 Oxygen Index

The minimum concentration of oxygen by percentage volume in a mixture of oxygen and nitrogen introduced at $23 \pm 2^\circ\text{C}$ that will just support combustion of a material under specified test conditions.

4 PRINCIPLE

A small test specimen is supported vertically in a mixture of oxygen and nitrogen flowing upwards through a transparent chimney. The upper end of the specimen is ignited and the subsequent burning behaviour of the specimen is observed to compare the period for which burning continues, or the length of specimen burnt, with specified limits for such burning. By testing a series of specimens in different oxygen concentrations, the minimum oxygen concentration is estimated

at which the burning behaviour of 50 percent of specimens representing the material under test would exceed at least one of the specified limits for burning.

5 APPARATUS

The following apparatus shall be arranged as indicated by the diagrams in Fig. 1 and 2.

5.1 Test Chimney

A heat-resistant glass tube supported vertically on a base through which oxygen-containing gas mixtures can be introduced.

5.1.1 The preferred dimensions of the chimney are 450 mm minimum height and 75 mm minimum diameter (cylindrical bore). The upper outlet shall be restricted as necessary by an overhead cap having an outlet small enough to produce an exhaust velocity of at least 90 mm/s from a flow rate within the chimney of 30 mm/s (*see Note*). Chimneys of other dimensions, with or without restricted outlets, may be used, if shown to give equivalent results.

5.1.2 The bottom of the chimney, or the base upon which the chimney is supported, shall incorporate a means for distributing evenly the gas mixture entering the chimney. The preferred means comprises solid glass beads of between 3 and 5 mm diameter, in a layer between 80 and 100 mm deep. Other means, such as radial manifolds, may be used, if shown to give equivalent results. A porous screen may be mounted below the level of the specimen holder, to prevent falling combustion debris from fouling the gas entry and distribution paths.

5.1.3 The chimney support may incorporate a levelling device and indicator, to facilitate vertical alignment of the chimney and a test specimen supported therein. A dark background may be provided to facilitate observation of flames within the chimney.

NOTE — For tubes of 75 to 100 mm diameter, a cap converging to an outlet of 40 mm diameter at a level at least 10 mm above the top of the cylindrical chimney has been found satisfactory.

5.2 Test Specimen Holder

Suitable for supporting a specimen vertically in the centre of the chimney.

5.2.1 For self/supporting materials, the specimen shall be held by a small clamp which is at least 15 mm away from the nearest point at which the specimen may burn before the extent-of-burning criterion is exceeded. For

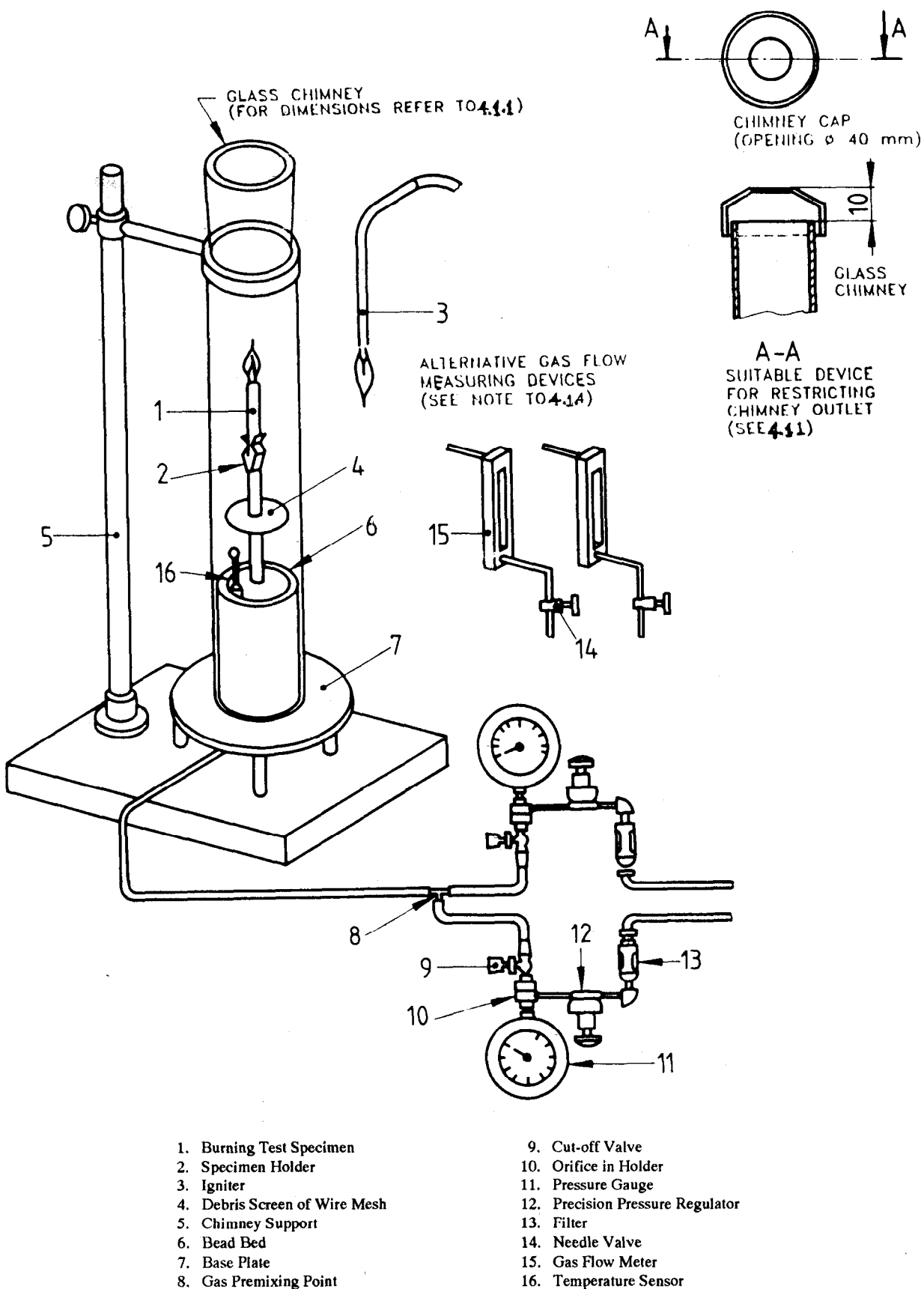
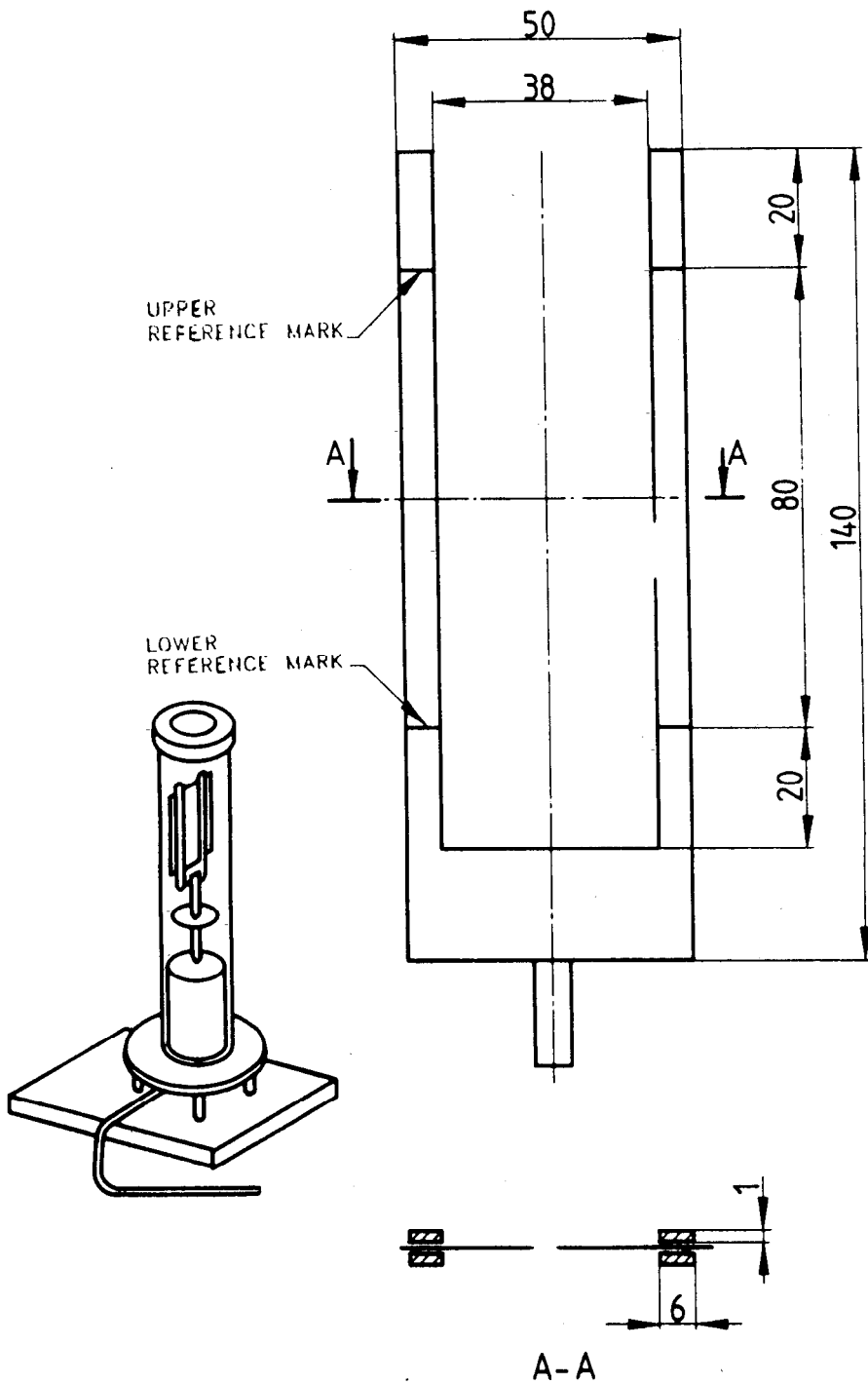


FIG. 1 DIAGRAM OF A TYPICAL APPARATUS FOR DETERMINATION OF OXYGEN INDEX



Two frame sections must hold the test specimen securely along both upright edges between forks each made of stainless steel.

All dimensions in millimetres with tolerances ± 0.25 mm.

FIG. 2 FRAME DESIGN FOR SUPPORTING NON-SELF SUPPORTING TEST SPECIMENS

supported film or sheet test specimens, the specimen shall be supported by both vertical edges in a frame equivalent to that illustrated by Figure 2, with reference marks at 20 mm and 100 mm below the top of the frame.

5.2.2 The profile of the holder and its support should be smooth to minimize induction of turbulence in the rising flow of gas.

5.3 Gas Supplies

Comprising pressurized sources of oxygen and/or nitrogen not less than 98 percent (*m/m*), pure and/or clean air (containing 20.9 percent oxygen), as appropriate.

5.3.1 The moisture content of the gas mixture entering the chimney shall be less than 0.1 percent (*m/m*), unless the results have been shown to be insensitive to higher moisture levels in the gas mixture. The gas supply system shall incorporate a drying device, or provision for monitoring or sampling the gas supply for moisture content, unless the moisture content of the gas supplies is known to be acceptable.

5.3.2 The constituent gas supply lines shall be linked in a manner which thoroughly mixes the gases, before they enter the gas distribution device at the base of the chimney, so that the variation in oxygen concentration in the gas mixture rising in the chimney, below the level of the test specimen, is less than 0.2 percent (*V/V*).

NOTE – It should not be assumed that bottled oxygen or nitrogen will always contain less than 0.1 percent (*m/m*) of water; moisture contents of 0.003 percent to 0.01 percent (*m/m*) are typical for commercial supplies as filled bottles more than 98 percent (*m/m*) pure, but as such bottled gases are depressured to below about 1 MPa, the moisture content of the gas drawn off may rise above 0.1 percent (*m/m*).

5.4 Gas Measurement and Control Devices

Suitable for establishing the concentration of oxygen in the gas mixture entering the chimney with an accuracy of ± 0.5 percent (*V/V*) of the mixture and for adjusting the concentration with a precision of ± 0.1 percent (*V/V*) of the mixture when the gas velocity through the chimney is 40 ± 10 mm/s at $23 \pm 2^\circ\text{C}$.

5.4.1 Means shall be provided for checking or ensuring that the temperature of the gas mixture entering the chimney is $23 \pm 2^\circ\text{C}$. If this involves an internal probe, its position and profile shall be designed to minimize induction of turbulence within the chimney.

NOTE – Systems of measurement and control that have proved satisfactory include the following :

- a) Needle valves on individual and mixed gas supply lines, a paramagnetic oxygen analyser that continuously samples the mixed gas, and a flowmeter to indicate when the gas flow through the chimney is within the required limits;
- b) Calibrated orifices, gas pressure regulators and pressure gauges on the individual gas supply lines; and
- c) Needle valves and calibrated flowmeters on the individual gas supply lines.

Systems (b) and (c) may require calibration after assembly to ensure that the compounded errors of the component parts do not exceed the requirements of 5.4.

5.5 Flame Igniter

Comprising a tube that can be inserted into the chimney to apply to the test specimen a flame issuing from an outlet of 2 ± 1 mm diameter at the end of the tube.

5.5.1 The flame fuel shall be propane, without pre-mixed air. The fuel supply shall be adjusted so that the flame will project 16 ± 4 mm vertically downwards from the outlet when the tube is vertical within the chimney and the flame is burning within the chimney atmosphere.

5.6 Timing Device

Capable of measuring periods up to 5 min with an accuracy of ± 0.2 s.

5.7 Fume Extraction System

Providing sufficient ventilation or exhaust to remove fumes or soot expelled from the chimney without disrupting the gas-flow rate or temperatures in the chimney.

NOTE – If soot-generating materials are being tested, the glass chimney may require cleaning to maintain good visibility, and the gas inlets, or inlet screen, and temperature sensor (if fitted) may also require cleaning to function properly. Suitable precautions should be taken to protect personnel from noxious materials or burns during testing or cleaning operations.

6 CALIBRATION OF EQUIPMENT

6.1 For compliance with this method, calibrate the equipment periodically in accordance with the instructions given in Annex A so that the maximum interval between recalibration and use complies with the periods stated in Table 1.

Table 1 Calibration of Equipment

Sl No.	Item	Maximum Period
(1)	(2)	(3)
i)	Gas-flow rate controls	6 months
ii)	Oxygen concentration controls	6 months
iii)	Gas system joints (as required by A-2)	
	a) for joints disturbed during use or cleaning of the apparatus	24 h
	b) for undisturbed joints	6 months

7 PREPARATION OF TEST SPECIMENS

7.1 Sampling

Obtain a sample sufficient for preparation of at least 15 test specimens. The sample shall be taken, if relevant, in accordance with the material specification, otherwise in accordance with IS 4905 : 1968.

NOTE – For a material for which the oxygen index is known to within ± 2 , 15 test specimens may be sufficient. For materials of unknown oxygen index, or which exhibit erratic burning characteristics, between 15 and 30 test specimens may be required.

7.2 Test Specimen Dimensions and Their Preparation

Using, if applicable, procedures that comply with the appropriate material specification or Indian Standard methods for specimen preparation, mould or cut test specimens that satisfy the dimensions specified for the most appropriate specimen form given in Table 2.

7.2.1 Ensure that the surfaces of the specimens are clean and free from flaws that could affect burning behaviour, for example peripheral moulding flash or burrs from machining.

7.2.2 Note the position and orientation of test specimens with respect to any asymmetry in the sample material.

NOTES

- 1 Some material specifications may require choice and identification of the "state of the test specimen" used; for example, in a "defined state" or a "basic state" for a styrene-based polymer or copolymer.
- 2 Oxygen index results may be significantly affected by differences in ease of ignition or of burning behaviour, due to material inhomogeneity (for example, different levels of shrinkage when heated for specimens cut in different directions from asymmetrically-oriented thermoplastic film).

7.3 Marking of Test Specimens

For monitoring the distance over which a specimen burns, it may be marked with transverse lines at one or more levels which are dependent upon the specimen form and the ignition procedure to be used. Self-supporting specimens are preferably marked on at least two adjacent faces. If wet inks are used, the marks shall be dry before the specimen is ignited.

7.3.1 Marks for Testing by Top Surface Ignition

Test specimens of Forms I, II, III or IV, to be tested in accordance with procedure A (see 8.2.1), shall be marked 50 mm from the end to be ignited.

7.3.2 Marks for Testing by Propagating Ignition

The reference marks for testing specimens of Form V are carried by the supporting frame (see Fig. 2), but such specimens may be marked at 20 mm and at 100 mm from the end to be ignited, for convenience when testing heat-stable materials.

7.3.2.1 If specimens of Forms I, II, III and IV are to be tested in accordance with Procedure B (see 8.2.1 and 8.2.3), they shall be marked at 10 mm and at 60 mm from the end to be ignited.

7.4 Conditioning

Unless otherwise specified in other established standards, each test specimen shall be conditioned for at least 88 h at $27 \pm 2^\circ\text{C}$ and (65 ± 5) percent RH immediately prior to use.

NOTE – Samples of cellular materials that may contain volatile flammable material should be purged of such volatile material prior to conditioning at 23°C and 50 percent RH. Test specimens may be purged satisfactorily by pre-conditioning in suitable ventilated ovens for 168 h. Larger blocks of such materials may require longer pre-treatment. Facilities for cutting specimens from cellular materials that may contain volatile flammable material must be suitable for the hazards involved.

8 PROCEDURE

8.1 Setting Up the Apparatus and Test Specimen

8.1.1 Maintain the ambient temperature for the test apparatus at $27 \pm 2^\circ\text{C}$. If necessary, keep the test specimens in an enclosure at $27 \pm 2^\circ\text{C}$ and 65 ± 5 percent RH from which each test specimen may be taken when required.

8.1.2 Recalibrate equipment components, if necessary (see 5 and Annex A).

8.1.3 Select an initial concentration of oxygen to be used. When possible, this may be based on experience of results for similar materials. Alternatively, try to

Table 2 Test Specimen Dimensions
(Clause 7.2)

SI No.	Test Specimen Form ¹	Dimensions			Typical Use
		Length	Width	Thickness	
(1)	mm (2)	mm (3)	mm (4)	mm (5)	(6)
i)	I	80 to 150	10 ± 0.5	4 ± 0.25	For moulding materials
ii)	II	80 to 150	10 ± 0.5	10 ± 0.5	For cellular materials
iii)	III ²	80 to 150	10 ± 0.5	< 10.5	For sheet materials "as received"
iv)	IV	70 to 150	6.5 ± 0.5	3 ± 0.25	Alternative size for self-supporting moulding or sheet materials for electrical purposes
v)	V ²	$140 \begin{smallmatrix} 0 \\ -5 \end{smallmatrix}$	52 ± 0.5	< 10.5	For flexible film or sheet

¹ Test specimens of Forms I, II, III and IV are suitable for materials that are self-supporting as these dimensions.
Test specimens of Form V are suitable for materials that require support during testing.
² Results obtained during Form III or Form V test specimens may only be comparable for specimens of the same form and thickness. It is assumed that the amount of variation in thickness for such materials will be controlled by other standards.

ignite a test specimen in air, and note the burning behaviour. If the specimen burns rapidly, select an initial concentration of about 18 percent (V/V) of oxygen; if the test specimen burns gently or unsteadily, select an initial oxygen concentration of about 21 percent; if the specimen does not continue to burn in air, select an initial concentration of at least 25 percent depending upon the difficulty of ignition or the period of burning before extinguishment in air.

8.1.4 Ensure that the test chimney is vertical (see Fig. 1). Mount a specimen vertically in the centre of the chimney so that the top of the specimen is at least 100 mm below the open top of the chimney and the lowest exposed part of the specimen is at least 100 mm above the top of the gas distribution device at the base of the chimney (see Fig. 1 or Fig. 2 as appropriate).

8.1.5 Set the gas mixing and flow controls so that an oxygen/nitrogen mixture at $27 \pm 2^\circ\text{C}$, containing the desired concentration of oxygen, is flowing through the chimney at a rate of 40 ± 10 mm/s. Let the gas flow purge the chimney for at least 30 s prior to ignition of each specimen, and maintain the flow without change during ignition and combustion of each specimen.

8.1.5.1 Record the oxygen concentration used as the volume percent calculated according to the equations given in Annex C.

8.2 Igniting the Test Specimen

8.2.1 Select one or two alternative ignition procedures which are dependent upon the specimen form as follows :

- a) For specimen Forms I, II, III and IV (see Table 2), use Procedure A, top surface ignition, as described in 8.2.2; and
- b) For specimen Form V, use Procedure B, propagating ignition, as described in 8.2.3.

Ignition shall imply, for the purposes of this International standard, the initiation of flaming combustion.

NOTES

1 For tests on materials that exhibit steady burning and spread of combustion in oxygen concentrations at, or close to, their oxygen index value, or for self-supporting specimens of less than 3 mm thickness, Procedure B (with specimens marked in accordance with 7.3.2) may be found to give more consistent results than Procedure A. Procedure B may then be used for specimens of Forms I, II, III or IV.

2 Some materials may exhibit a non-flaming type of combustion (for example, glowing combustion) instead of, or at a lower oxygen concentration than that required for, flaming combustion. When testing such materials, it is necessary to identify the type of combustion for which the oxygen index is required or measured.

8.2.2 Procedure A — Top Surface Ignition

For top surface ignition, the igniter is used to initiate burning only on the top surface of the upper end of the specimen.

8.2.2.1 Apply the lowest visible part of the flame to the top of specimen using a sweeping motion, if necessary,

to cover the whole surface, but taking care not to maintain the flame against the vertical faces or edges of the specimen. Apply the flame for up to 30 sec, removing it every 5 sec for just sufficient time to observe whether or not the entire top surface of specimen is burning. Consider the specimen to be ignited, and commence measurement of the period and distance of burning, as soon as removal of the igniter, after a contact period increment of 5 s, reveals burning supported by the whole of the top and surface of the specimen.

8.2.3 Procedure B — Propagating Ignition

For propagating ignition, the igniter is used to produce burning across the top and partially down the vertical faces of the specimen.

8.2.3.1 Lower and move the igniter sufficiently to apply the visible flame to the end face of the specimen and also, to a depth of approximately 6 mm, to its vertical faces. Continue to apply the igniter for up to 30 sec, with interruptions for inspection of the specimen every 5 sec, until its vertical faces are burning steadily or until the visibly burning portion first reaches the level of the upper reference mark on the support frame or, if used for specimens of Forms I, II, III or IV, on the specimen.

8.2.4 Consider the specimen to be ignited, for the purpose of measuring the period and extent of burning, as soon as any part of the visibly burning portion reaches the level of the upper reference mark.

NOTE — The burning portion includes any burning drips that may run down the surface of the specimen.

8.3 Assessing Burning Behaviour

For the purposes of 8.4 to 8.6 inclusive, observe and terminate the burning of individual test specimens as follows.

8.3.1 Commence measurement of the period of burning as soon as the specimen has been ignited in accordance with 8.2.2 or 8.2.3, as applicable, and observe its burning behaviour. If burning ceases but spontaneous re-ignition occurs in less than 1 sec, continue the observation and measurements.

8.3.2 If neither the period nor the extent of burning exceeds the relevant limit specified in Table 3 for the applicable specimen, note the duration and extent of burning. This is recorded as an "O" response.

8.3.2.1 Alternatively, if either the period or extent of burning exceeds the relevant limit specified in Table 3, note the burning behaviour accordingly, and extinguish the flame. This is recorded as an "X" response.

8.3.2.2 Note also the burning characteristics of the material, for example dripping, charring, erratic burning, glowing combustion or after-glow.

8.3.3 Remove the specimen and clean, as necessary, any surfaces within the chimney or on the igniter that

Table 3 Criteria for Oxygen Index Measurements¹

(Clause 8.3.2)

SI No.	Test Specimen (see Table 2)	Ignition Procedure	Alternative Criteria	
			Period of Burning After Ignition	Extent of Burning ²
(1)	(2)	(3)	(4)	(5)
i)	I, II, III and IV	A Top surface ignition	180	50 mm below the top of the specimen
		B Propagating ignition	180	50 mm below the upper reference mark
ii)	V	B Propagating ignition	180	80 mm below the upper reference mark (on the frame)

¹ These criteria do not necessarily produce equivalent oxygen index results for specimens of differing shape or tested using different ignition conditions or procedures.

² The extent of burning is exceeded when any part of the visibly burning portion of a specimen, including burning drips descending the vertical faces, passes the level defined in the fourth column of Table 3.

have become contaminated with soot, etc. Allow the chimney to regain a temperature of $27 \pm 2^\circ\text{C}$, or replace it with another so conditioned.

NOTE — If sufficiently long, the specimen may be inverted, or trimmed to remove the burnt end, and re-used. Results from such specimens can save material when establishing an approximate value for the minimum oxygen concentration required for combustion, but cannot be included among those used for estimation of the oxygen index, unless the specimen is reconditioned at the temperature and humidity appropriate for the material involved.

8.4 Selecting Successive Oxygen Concentrations

The procedure described in 8.5 and 8.6 is based upon the "Up-and-down method for small samples", using the specific case, where $N_T - N_L = 5$ (see 8.6.2 and 8.6.3), with an arbitrary step size for certain changes to be made in the oxygen concentration used.

8.4.1 During the testing, select the oxygen concentration to be used for testing the next test specimen gave an "X" response.

- Decrease the oxygen concentration if the burning behaviour of the preceding specimen gave an "X" response.
- Increase the oxygen concentration of the preceding specimen gave an "O" response.

8.4.2 Choose the size of the change in oxygen concentration in accordance with 8.5 and 8.6, as appropriate.

8.5 Determining the Preliminary Oxygen Concentration

Repeat the procedures specified in 8.1.4. to 8.4 inclusive, using oxygen concentration changes of any convenient step size, until two oxygen concentrations, in percent volume, have been found that differ by less than 10 and of which one gave an "O" response and the other an "X" response. From this pair of oxygen concentrations, note that which gave the "O" response as the preliminary oxygen concentration level and then

proceed in accordance with 8.6.

NOTES

1 The two results, at oxygen concentrations less than 1.0 apart, which give opposite responses, do not have to be from successive specimens.

2 That concentration which gave the "O" response does not have to be lower than that which gave the "X" response.

3 A format convenient for recording the information required by this and subsequent clauses is illustrated in Annex D.

8.6 Oxygen Concentration Changes

8.6.1 Using, again, the preliminary oxygen concentration (8.5) test one specimen by repeating 8.1.4 to 8.3 inclusive. Record both the oxygen concentration (c_o) used and the response, "X" or "O" as the first of the N_e and of the N_r series of results.

8.6.2 Change the oxygen concentration, in accordance with 8.4 using concentration changes (d) of 0.1 percent (V/V) (see Note) of the total gas mixture to test further specimens in accordance with 8.14 to 8.4 inclusive, noting the values of C_o and corresponding responses until a different response to that obtained in 8.6.1 is recorded.

8.6.2.1 The result from 8.6.1 plus those, if any, of like response from 8.6.2 constitute the N_L series of results (see example in Annex D, Part 2).

NOTE — Where experience has shown that the requirements of 8.6.4 are usually satisfied by a value of d other than 0.2 percent that value may be selected as the initial value of d .

8.6.3 Test four more specimens, in accordance with 9.1.4 to 9.4 inclusive, maintaining $d = 0.2$ percent, and note the c = used for, and response of, each specimen. Designate the oxygen concentration used for the last specimen as c_F .

8.6.3.1 These four results together with the last result from 8.6.2 (that is, that which differed in response from

that of 8.6.1) constitute the remainder of the N_T series, so that

$$N_T = N_L + 5$$

(see example in Annex D, Part 2).

8.6.4 Calculate the estimated standard deviation, $\hat{\sigma}$, of the oxygen concentration measurements from the last six responses in the N_T series (including C_F), in accordance with 9.3. If the condition

$$\frac{2\hat{\sigma}}{3} < d < 1.5 \hat{\sigma}$$

is satisfied, calculate the oxygen index in accordance with 9.1 otherwise

- if $d < 2 \hat{\sigma}/3$, repeat steps 8.6.2 to 8.6.4, using increased values for d , until the condition is satisfied, or
- if $d > 1.5 \hat{\sigma}$, repeat steps 8.6.2 to 8.6.4, using decreased values for d , until the condition is satisfied, except that d shall not be reduced below 0.2 unless so required by the relevant material specification.

9 CALCULATIONS AND EXPRESSION OF RESULTS

9.1 Oxygen Index

Calculate the oxygen index OI , expressed as a percentage by volume, from the relationship

$$OI = C_F + kd$$

where

C_F = the final value of oxygen concentration, in percent volume to one decimal place, used in the series of N_T measurements performed in accordance with 8.6, and noted in accordance with 8.6.3;

d = the interval, in percent volume to at least one decimal place, between oxygen concentration levels used and controlled in accordance with 8.6; and

k = a factor to be obtained from Table 4, as described in 9.2.

For the purpose of calculation of $\hat{\sigma}$, as required by 8.6.4 and 9.3, the OI which shall be calculated to two decimal places.

For the purpose of reporting OI results, express OI values to the nearest 0.1, with exactly intermediate results being rounded downwards.

9.2 Determination of Thermal Conductivity (k)

The value and sign of thermal conductivity (k) are dependent upon the pattern of the responses of specimens tested in accordance with 8.6 and may be determined from Table 4 as follows :

- If the response of the specimen tested according to 8.6.1 was "O", so that the first contrary response (see 8.6.2) was an "X", refer to column 1 of Table 4 to select the row for which the last four response symbols correspond to those found when testing in accordance with 8.6.3. The value and sign of k will be that shown in column 2, 3, 4 or 5 for which the number of "O"s shown in row (a) of the table corresponds to the number of "O" responses found for the N_L series, in accordance with 8.6.1 and 8.6.2; or
- If the response of the specimen tested according to 8.6.1 was "X", so that the first contrary response was an "O", refer to the seventh column of Table 4 to select the row for which the last four response symbols correspond to those found when testing in accordance with 8.6.3. The value of k will be that shown in column 3, 4, 5 or 6 for which the number of "X"s shown in row (b) of the table corresponds to the number of "X" responses found for the N_L series, in accordance with 8.6.1 and 8.6.2, but the sign of k must be reversed, so that the negative values shown in Table 4 for k become positive, and vice versa.

NOTE — An example of the determination of k and the calculation of an OI is given in Annex D.

9.3 Standard Deviation of Oxygen Concentration Measurements

For the purposes of 8.6.4, calculate the estimated standard deviation, $\hat{\sigma}$, of oxygen concentration measurements from the relationship

$$\hat{\sigma} = \sqrt{\frac{(C_1 - OI)^2}{n - 1}}$$

where

C_1 = represents, in turn, each of the percent oxygen concentrations used during measurement of the last six responses in the N_T series of measurements.

OI = the oxygen index value, calculated in accordance with 9.1.

n = the number of measurements of oxygen concentration contributing to $\Sigma(C_1 - OI)^2$.

NOTE — For this method, $n = 6$, in accordance with 8.6.4. For $n < 6$, the method loses precision. For $n > 6$, alternative statistical criteria would apply.

Table 4 Values of k for Calculating Oxygen Index Concentration from Determinations Made by Dixon's "Up-and-Down" Method

(Clause 9.4)

SI No.	Responses for the Last Five Measurements	Values of k for Which the First N_L Determination are				
		(a) O	OO	OOO	OOOO	
(1)	(2)	(3)	(4)	(5)	(6)	(7)
i)	XOOOO	-0.55	-0.55	-0.55	-0.55	OXXXX
ii)	XOOOX	-1.25	-1.25	-1.25	-1.25	OXXXO
iii)	XOOXO	0.37	0.38	0.38	0.38	OXXOX
iv)	XOOXX	-0.17	-0.14	-0.14	-0.14	OXXOO
v)	XOXOO	0.02	0.04	0.04	0.04	OXOXX
vi)	XOXOX	-0.50	-0.46	-0.45	-0.45	OXOXO
vii)	XOXXO	1.17	1.24	1.25	1.25	OXOOX
viii)	XOXXX	0.61	0.73	0.76	0.76	OXOOO
ix)	XXOOO	-0.30	-0.27	-0.26	-0.26	OXXXX
x)	XXOOX	-0.83	-0.76	-0.75	-0.75	OXXOX
xi)	XXOXO	0.83	0.94	0.95	0.95	OXXOX
xii)	XXOXX	0.30	0.46	0.50	0.50	OXXOO
xiii)	XXXOO	0.50	0.65	0.68	0.68	OOOXX
xiv)	XXXOX	-0.04	0.19	0.24	0.25	OOOXO
xv)	XXXXO	1.60	1.92	2.00	2.01	OOOOX
xvi)	XXXXX	0.89	1.33	1.47	1.50	OOOOO

Values of k for which the first N_L Determinations are :

b) X	XX	XXX	XXXX	Responses for the last five measurements
------	----	-----	------	------------------------------------------

are as given in the above table opposite the appropriate response in column 6, but with the sign of k reversed, that is,
 $Ol = C_F - kd$ (see 9.1)

9.4 Precision of Results

This method may be expected to be capable of the limits given in Table 5 for materials that ignite without difficulty and burn steadily.

Table 5 Estimated Precision Limits

SI No.	Approximate Values for 95 Percent Confidence	Within Laboratories	Between Laboratories
(1)	(2)	(3)	(4)
i)	Standard deviation	0.2	0.5
ii)	Repeatability (r)	0.5	—
iii)	Reproducibility (R)	—	1.4

NOTE — Materials that exhibit erratic combustion behaviour may increase the limits in Table 5 by a factor up to 5. On the other hand, it may be found that, for materials that exhibit very consistent burning behaviour, $d > 1.5$ and even if d is reduced to 0.1, indicating the greater precision is possible. For practical purposes, the accuracy and precision requirements specified for apparatus by this International Standard are inadequate for significant discrimination if using $d < 0.1$, and results obtained using this method have not been found to be significantly different for $d < 0.2$. More precise determination of the minimum oxygen concentration to just support combustion would require different apparatus and the use of different statistical relationships and factors to determine the value from a longer series of measurements.

10 TEST REPORTS

10.1 The test report shall include the following information :

- a reference to this International Standard;
- a statement that test results relate only to the behaviour of the test specimens under the conditions of this test and that these results must not be used to infer the fire hazards of the material in other forms or under other fire conditions;
- identification of the material tested, including, where relevant, the type of material, density, previous history, and the specimen orientation with respect to any anisotropy in the material or sample;
- the test specimen form or dimensions;
- the ignition procedure used (A or B), and the igniter used, if other than the standard propane flame;
- the oxygen index;
- the estimated standard deviation and the oxygen concentration increment used, if other than 0.2 percent;
- a description of any relevant ancillary characteristics or behaviour, such as charring, dripping, severe shrinkage, erratic burning, afterglow; and
- any variations from the requirements of this International Standard.

ANNEX A

[Clause 6.1, and Table 1, SI No. (iii)]

CALIBRATION OF EQUIPMENT

A-1 CALIBRATION OF GAS-FLOW RATE CONTROLS

A-1.1 The system for indicating the gas-flow rate through the chimney, to satisfy 5.4 and 8.1.5, shall be checked using a water-sealed rotating drum meter (wet test meter), or an equivalent device, with an accuracy equivalent to ± 2 mm/s flow rate through the chimney.

A-1.2 The flow rate shall be estimated by dividing the total gas-flow rate through the chimney by the cross-sectional area of the bore of the chimney, for example by using the equation

F = 1.27 × 10⁶ $\frac{q_v}{D^2}$

where

F = the flow rate through the chimney, in mm/sec;

q_v = the total gas-flow at 23 ± 2°C through the chimney, in l/sec; and

D² = the diameter of the bore of the chimney, in mm.

A-2 CALIBRATION OF OXYGEN CONCENTRATION CONTROLS

A-2.1 The concentration of oxygen in the mixture of gases flowing into the chimney shall be checked to an accuracy of 0.1 percent (V/V) of mixture, either by sampling the chimney atmosphere for analysis or by using an independently calibrated oxygen analyser *in situ*. Integral oxygen analysers may be calibrated using standard oxygen/nitrogen mixtures. The checks should be carried out for at least three different nominal concentrations, representing respectively maximum, minimum and intermediate levels for the oxygen concentration range for which the equipment is to be used.

A-2.1.1 Leak tests shall be carried out on all joints where leaks could change the oxygen concentration levels in the chimney from the concentration levels set or indicated.

A-3 CALIBRATION OF COMPLETE EQUIPMENT

A-3.1 The performance of the equipment may be checked, for a specific test procedure, by testing a calibrated material and comparing the measured results with the expected result for the calibrated material. For information on the availability and use of calibrated materials, see Annex B.

ANNEX B

(Clause A-3.1)

MATERIALS CALIBRATED FOR OXYGEN INDEX VALUES

It may be found desirable periodically to test materials characterized for oxygen index, to check the overall performance of a particular combination of oxygen index measurement equipment and operator (s).

The results obtained for particular samples of certain

materials tested using the procedures of this method in an interlaboratory experiment involving 16 laboratories from seven different countries have been expressed in Table 6 as the range within which a single test result should be found, with 95 percent confidence, for each particular material/igniter/test procedure combination.

Table 6 Reference Material Oxygen Index Values

Material	Procedure A Top Surface Ignition		Procedure B Propagating Ignition	
	Flame	Incandescent	Flame	Incandescent
Polypropylene	183-19.0	177-18.1	177-18.2	173-18-.1
Melamine formaldehyde (MF)	410-43.6	408-44.3	396-42.5	404-43.8
PMMA 3 mm thick	173-18.1	175-18.1	172-18.0	172-17.9
PMMA 10 mm thick	179-19.0	178-18.7	175-18.5	175-18.6
Phenolic foam 10.5 mm thick	391-40.7	389-40.8	396-40.9	391-40.9
PVC film 0.02 mm thick	—	—	224-23.6	226-23.5

ANNEX C

(Clause 8.1.5.1)

CALCULATION OF OXYGEN CONCENTRATION

Oxygen concentrations required for the purposes of 8 shall be calculated according to the equation

$$C_o = \frac{100 V_o}{V_o + V_N}$$

where

C_o = the oxygen concentration, in percent by volume;

V_o = the volume of oxygen per volume of mixture, at 23°C; and

V_N = the volume of nitrogen per volume of mixture, at 23°C.

the proportion of oxygen present in streams other than a pure oxygen supply. For example, for mixtures made using air mixed with oxygen of 98.5 percent (V/V) purity or with nitrogen containing 0.5 percent (V/V) of oxygen, the oxygen concentration, in percent by volume, should be calculated using the relationship

$$C_o = \frac{98.5 V_o + 20.9 V_A + 0.5 V_N}{V_o + V_A + V_N}$$

where

V_o = the volume of oxygen stream used, per volume of mixture;

V_A = the volume of air stream used, per volume of mixture; and

V_N = the volume of nitrogen stream used, per volume of mixture.

NOTES

1 If an oxygen analyser is used, the oxygen concentration should be determined using the readout from the particular instrument used.

2 If the result is calculated from flow or pressure data for individual gas streams contributing to the mixture, it is necessary to allow for

assuming that the streams are at the same pressure at 23°C.

For mixtures based on two gas streams, V_o , V_A or V_N becomes zero, as appropriate.

ANNEX D

(Clause 8.5)

TYPICAL TEST RESULTS SHEET

Material : Phenolic laminate
Specimen form : III (4 mm thick)
Ignition procedure : A B
Conditioning procedure : 23-23/50
Oxygen concentration
increment (d) : 0.2

Oxygen Index (concentration, percent) : 29.5
(rounded to 0.1 percent)
 δ : 0.152
Date of test : DD/MM/YY
Laboratory No. ____, Test No. 1

Part 1 : Determination of Oxygen Concentration for One Pair of "X" and "O" Response at < 1 Percent O_2 Concentration Interval (in accordance with 8.5)

Oxygen concentration (percent)	25.0	35.0	30.0	32.0	31.0
Burning period(s)	10	> 180	140	> 180	> 180
Length burnt (mm)					
Response ("X" or "O")	0	X	0	X	X

Oxygen concentration of the "O" response for the pair = 30.0 (being the concentration to be used again for the first measurement in Part 2)

Part 2 : Determination of the Oxygen Index Value
(in accordance with 8.6)

Step size to be used for successive changes in
oxygen concentration of *d* percent = 0.2 percent
(initially to be 0.2 percent, unless otherwise instructed)

<u>N_T SERIES MEASUREMENTS</u>										
	N_T Series Measurements (9.6.1 + 9.6.2)					(9.6.3) C_F				
Oxygen concentration (percent)	30.0	29.8	29.6	29.4		29.4	29.6	29.4	29.6	29.8
Burning period(s)	>180	>180	>180	150		150	>180	110	165	>180
Length burnt (mm)										
Response (“X” or “O”)	X	X	X	— —	→	O	X	O	O	X
	Column (2, 3, 4 or 5) : 4					Row (1 to 16) : 7				
k value from Table 4 : 1.25										
						Hence, $k = -1.25$				

$OI = c_F + kd$
= 29.8 + (-1.25 × 0.2)
= 29.5 percent (to one decimal place, for reporting *OI*)
= 29.55 percent (to 2 decimal places, for calculation of and
verification of *d* as required in Part 3)

Part 3 : Verification of Step Size *d* Percent Oxygen Concentration
(in accordance with 8.6.4 and 9.3)

Last Six Results		<i>c_i</i> ¹	Oxygen Concentration (Percent)			Estimation of standard deviation
			<i>OI</i>	<i>c_i</i> - <i>OI</i>	(<i>c_i</i> - <i>OI</i>) ²	
<i>c_F</i>	1	29.8	29.55	0.25	0.062 5	$\hat{\sigma} = \left[\frac{(c_i - OI)^2}{n - 1} \right]^{1/2}$ $= \left[\frac{0.115}{5} \right]^{1/2} = 0.152$ $2/3 \hat{\sigma} = 0.101$ $d = 0.2$ $3/2 \hat{\sigma} = 0.227$
	2	29.6	29.55	0.05	-0.002 5	
	3	29.4	29.55	-0.15	0.022 5	
	4	29.6	29.55	0.05	0.002 5	
	5	29.4	29.55	-0.15	0.022 5	
<i>n</i>	6	29.6	29.55	0.15	0.002 5	
Total			(<i>C_i</i> - <i>OI</i>) ²		0.115 0	

¹ Column *c_i* contains the oxygen concentrations used for the measurements of *c_F* and for each of the 5 preceding measurements, for *n* = 6

If $2/3 \hat{\sigma} < d < 3/2 \hat{\sigma}$ or if $0.2 = d > 3/2 \hat{\sigma}$, *OI* is valid

Otherwise

if $2/3 \hat{\sigma} > d$, repeat Part 2 using a larger value for *d*; or
if $3/2 \hat{\sigma} < d$, repeat Part 2 using a smaller value for *d*.

Then again verify the step size, making further changes to be step size if necessary until one of the verification relationships is satisfied.

Part 4 : Ancillary Information

- a) These test results relate only to the behaviour of the specimens under the conditions of this test. These results must not be used to infer the relative hazards presented by differing materials or shapes under these or other fire conditions.
- b) Special material history/characteristics, if applicable.
- c) Variations from standard procedure, if applicable.
- d) Description of observed burning behaviour.
- e) Results measured/reported by

Standard Mark

The use of the Standard Mark is governed by the provisions of the *Bureau of Indian Standards Act, 1986* and the Rules and Regulations made thereunder. The Standard Mark on products covered by an Indian Standard conveys the assurance that they have been produced to comply with the requirements of that standard under a well defined system of inspection, testing and quality control which is devised and supervised by BIS and operated by the producer. Standard marked products are also continuously checked by BIS for conformity to that standard as a further safeguard. Details of conditions under which a licence for the use of the Standard Mark may be granted to manufacturers or producers may be obtained from the Bureau of Indian Standards.

Bureau of Indian Standards

BIS is a statutory institution established under the *Bureau of Indian Standards Act, 1986* to promote harmonious development of the activities of standardization, marking and quality certification of goods and attending to connected matters in the country.

Copyright

BIS has the copyright of all its publications. No part of these publications may be reproduced in any form without the prior permission in writing of BIS. This does not preclude the free use, in the course of implementing the standard, of necessary details, such as symbols and sizes, type or grade designations. Enquiries relating to copyright be addressed to the Director (Publications), BIS.

Revision of Indian Standards

Indian Standards are reviewed periodically and revised, when necessary and amendments, if any, are issued from time to time. Users of Indian Standards should ascertain that they are in possession of the latest amendments or edition. Comments on this Indian Standard may be sent to BIS giving the following reference :

Doc : No. CHD 27 (9643)

Amendments Issued Since Publication

Amend No.	Date of Issue	Text Affected

BUREAU OF INDIAN STANDARDS

Headquarters:

Manak Bhavan, 9 Bahadur Shah Zafar Marg, New Delhi 110002
Telephones : 331 01 31, 331 13 75

Telegrams : Manaksanstha
(Common to all Offices)

Regional Offices:

	Telephone
Central : Manak Bhavan, 9 Bahadur Shah Zafar Marg NEW DELHI 110002	{ 331 01 31 331 13 75
Eastern : 1/14 C. I. T. Scheme VII M, V. I. P. Road, Maniktola CALCUTTA 700054	37 86 62
Northern : SCO 445-446, Sector 35-C, CHANDIGARH 160036	53 38 43
Southern : C. I. T. Campus, IV Cross Road, MADRAS 600113	235 02 16
Western : Manakalaya, E9 MIDC, Marol, Andheri (East) BOMBAY 400093	6 32 92 95

Branches : AHMADABAD. BANGALORE. BHOPAL. BHUBANESHWAR. COIMBATORE.
FARIDABAD. GHAZIABAD. GUWAHATI. HYDERABAD. JAIPUR. KANPUR.
LUCKNOW. PATNA. SRINAGAR. THIRUVANANTHAPURAM.

AMENDMENT NO. 1 JULY 2003

TO

**IS 11239 (Part 14) : 1992 METHODS OF TEST FOR
RIGID CELLULAR THERMAL INSULATION
MATERIALS**

PART 14 DETERMINATION OF FLAMMABILITY BY OXYGEN INDEX

[The designation of the standard IS 11239 (Part 14) : 1992 is replaced by IS 11239 (Part 13) : 1992. Wherever the designation IS 11239 (Part 14) is occurring in this standard, it will be read as IS 11239 (Part 13) :1992.]

(CHD 27)

Reprography Unit, BIS, New Delhi, India